

THE PARK CATTLE SOCIETY'S  
HERD BOOK

---

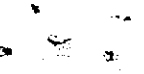
VOLUME XII.

---

1940

Printed :

W. E. BAXTER LTD., PRINTERS, 34 AND 35, HIGH STREET.



# THE PARK CATTLE SOCIETY

**President :**

THE DUKE OF HAMILTON.

**Vice-President :**

THE LORD DYNEVOR.

**Council :**

SIR CLAUD ALEXANDER, Bart.	CAPTAIN H. J. CATOR, M.C.
MISS ALEXANDER.	THE LORD DYNEVOR.
T. C. ASKEW.	JAMES A. FARMER.
C. R. BIRKBECK.	MRS. QUINTIN E. GURNEY.
WALTER BUXTON.	BRIG.-GEN. K. KINCAID SMITH, C.B.
JOHN CATOR.	SAM WOODIWISS.

**Executive Committee :**

C. R. BIRKBECK.	MAJOR QUINTIN E. GURNEY.
CAPTAIN H. J. CATOR, M.C.	MRS. QUINTIN E. GURNEY.
JOHN CATOR.	SAM WOODIWISS.

**Hon. Treasurer :** MAJOR QUINTIN E. GURNEY.

**Hon. Secretary :** MISS ALEXANDER.

**Assistant Secretary :** MISS D. J. BANHAM,  
The Meadows,  
Crawley, Sussex.

# THE PARK CATTLE SOCIETY

## LIST OF MEMBERS

- Alexander, Sir Claud, Bart, Faygate Wood, Faygate, Sussex.  
Alexander, Miss W., Faygate Wood, Faygate, Sussex.  
Askew, T. C., Frog's Hall, Takeley, Bishop's Stortford, Hertfordshire,  
Assheton-Smith, Sir Michael, Bart., Vaynor Park, Bangor, N. Wales.  
Bedford, The Duke of, Woburn Abbey, Bletchley, Buckinghamshire.  
Birkbeck, C. R., Estate Office, Cottishall, Norwich, Norfolk.  
Black, Robert, Maiden Erlegh Stud Farm, Reading, Berks.  
Buxton, Walter, Bolwick, Marsham, Norwich, Norfolk.  
Cator, Captain H. J., M.C., Ranworth Hall, Norwich, Norfolk.  
Cator, John, Woodbastwick Hall, Norwich, Norfolk.  
Ducker, N. B., Littlestoke Manor, North Stoke, Oxford.  
Dynevor, The Lord, Dynevor Castle, Llandilo, S. Wales.  
Essex Agricultural Society (W. M. Balch), 1, King Edward Avenue,  
Chelmsford, Essex.  
Farmer, James A., Stumbleholme Farm, Ifield, Crawley, Sussex.  
Gurney, Mrs. Quintin E., Bawdeswell Hall, East Dereham, Norfolk.  
Gurney, Major Quintin E., Bawdeswell Hall, East Dereham, Norfolk.  
Hamilton, The Duke of, Hamilton Palace, Lanarkshire.  
Kincaid Smith, Brigadier-General K., C.B., C.M.G., D.S.O., St.  
Osyth Priory, Clacton-on-Sea, Essex.  
Lancaster, Colonel C. G., M.P., Kelmarsh Hall, Northampton.  
Trench, Desmond P., Yew Tree Farm, Emery Down, New Forest,  
Hampshire.  
Woodiwiss, Sam, Sedgemere, Great Waltham, Chelmsford, Essex.

## PREFACE

---

It is my sad duty to record the lamented deaths of the Duke of Bedford, K.G., and the Duke of Hamilton, who had held the position of President and Vice-President since the formation of the Society in 1918. Their herds, however, are being carried on by their successors, and the Society's very grateful thanks are due to the Duke of Hamilton and Lord Dynevor respectively for kindly accepting the vacant offices.

The Society has also lost two Members by resignation, the Duke of Grafton and Sir Anthony Wingfield, but have gained a new one in Mr. Robert Black, famous in the Hackney Horse world, and a great dairy farmer, who will be able to appreciate the utility qualities of our breed.

There are, of course, no milk records or show Awards to chronicle, but in spite of the war conditions the census shows only a slight decrease, and that, as was to be expected, mostly in bulls, while the transfers have increased to 6 bulls and 10 cows, compared with 5 bulls and 7 cows in Vol. XI.

I must apologise for the late appearance of this volume, but my assistant, Miss Banham, and I have only recently taken office, and the difficulty of collecting material in war time has been considerable.

W. ALEXANDER.

## OBITUARY

---

HERBRAND RUSSELL,

DUKE OF BEDFORD, K.G.

The Society have to mourn the loss of their first President, a perfect President, and I have lost a valued friend. This, however, is not the place to write of his great qualities as a man and a friend, but I want to try to put on record what he did for our Society, and how he revived the Chartley herd, when it seemed to be beyond the power of man to do so.

By nature he was the most retiring of men and hated Shows and publicity of all kinds, but he realised that the time was fast approaching when only animals of definite use and economic value would be able to survive, and so, when the Society was started, he immediately gave it his whole-hearted support, he helped us to get the Royal's board room for our Inaugural Meeting, and then to get classes at their show, and, as time went on, wherever guarantees or entries were needed he was ever ready to help with both. His London house was always at our disposal for Meetings and he hardly ever failed to attend one. He had too a wonderful way of dealing with any point of business that might arise in the clearest and briefest way, never using a word too many or one too few. His kindness to Members was extraordinary, he had only to hear that anyone was in want of a bull and he would offer to give one, and on such occasions he would always choose the animal from among his spare bulls personally with the greatest care.

His greatest joy was in wild animals, and he delighted in saving the rarest kinds, such as European bison, Prejvalsky's wild horses, and Pere David's deer, from extinction, and it was to see these that he first asked me to spend a day at Woburn, and there too were the three survivors of the Chartley tragedy of 1905, a white bull and cow



Census of the Wild Herds  
at December 31st, 1940

---

THE CADZOW HERD.

Owner : The Duke of Hamilton, Hamilton Palace, Lanarkshire.  
6 bulls, 22 cows, and 4 heifer calves.

---

THE CHILLINGHAM HERD.

Owners : Chillingham Wild Cattle Association, Chillingham,  
Chatton, Northumberland.  
9 bulls, 18 cows and 1 heifer calf.

---

THE VAYNOL HERD.

Owner : Sir Michael Assheton Smith, Bart., Vaynol Park, Bangor,  
N. Wales.  
2 bulls, 1 bull calf, 11 cows, 10 heifers (in calf), 3 yearling heifers.



## Census of the Horned Herds at December 31st, 1940

---

### THE CHARTLEY HERD (at Woburn).

Owner : The Duke of Bedford.  
6 bulls and 17 cows.

---

### THE DYNEVOR HERD.

Owner : The Lord Dynevor.  
1 bull, 21 cows, 2 heifers and 1 heifer calf.

---

### THE EMERY DOWN HERD.

Owner : D. P. Trench.  
1 cow.

---

### THE FAYGATE HERD.

Owner : Sir Claud Alexander, Bart.  
1 bull, 7 cows, 2 heifers, and 3 heifer calves.

---

### THE LITTLESTOKE HERD.

Owner : N. B. Ducker.  
1 bull, 4 cows and 2 heifer calves.

---

### THE STUMBLEHOLME HERD.

Owner : James Farmer.  
2 heifers.

## Census of the Polled Herds at December 31st, 1940

---

### THE BAWDESWELL HERD.

Owner : Major Q. E. Gurney.

7 bulls, 50 cows, 41 heifers and 16 heifer calves.

---

### THE BOLWICK HERD.

Owners : Buxton & Birkbeck.

2 bulls, 17 cows and 18 heifers.

---

### THE EMERY DOWN HERD.

Owner : D. P. Trench.

1 bull and 9 cows.

---

### THE FAYGATE HERD.

Owner : Sir Claud Alexander, Bart.

1 bull, 2 cows, and 1 heifer.

---

### THE KELMARSH HERD.

Owner : Colonel C. G. Lancaster, M.P.

3 bulls, 48 cows and heifers.

THE LITTLESTOKE HERD.

Owner : N. B. Ducker.  
2 cows and 2 heifer calves.

---

THE ST. OSYTH HERD.

Owner : Brig.-General K. Kincaid Smith, C.B.  
1 bull, 14 cows, 3 heifers and 4 calves.

---

THE STUMBLEHOLME HERD.

Owner : James Farmer.  
1 bull, 8 cows and heifers.

---

THE WOODBASTWICK HERD.

Owner : John Cator.  
2 bulls, 18 cows and 9 heifer calves.

Register of the Horned Herds

---

THE AMPHILL HERD

Owner—SIR ANTHONY H. WINGFIELD,  
Amphill House, Amphill, Beds.

COW.

AMPHILL LILY 2nd 3056,

White with black points, calved May 18th, 1940; breeder, Sir  
Anthony H. Wingfield;

*Sire*, Woburn Perfection 25th 733,

*Dam*, Amphill Lily 2792.

---

## THE DYNEVOR HERD

Owner—THE LORD DYNEVOR,

Dynevor Castle Llandilo, S. Wales.

### COWS.

#### DYNEVOR AGNETA 3058,

White with black points, calved October 3rd, 1940 ; breeder, The Lord Dynevor ;

*Sire*, Woburn Prince 6th 745,

*Dam*, Dynevor Vera 2550.

#### DYNEVOR ZEALOT 3060,

White with black points, calved March 24th, 1939 ; breeder, The Lord Dynevor ;

*Sire*, Woburn Perfection 21st 595,

*Dam*, Dynevor Oracle 1684.

#### DYNEVOR ZEBRA 3062.

White with black points, calved February 15th, 1939 ; breeder, The Lord Dynevor ;

*Sire*, Woburn Mike 5th 657,

*Dam*, Dynevor Silver 2330.

#### DYNEVOR ZENITH 3064,

White with black points, calved May 2nd, 1939 ; breeder, The Lord Dynevor ;

*Sire*, Woburn Perfection 21st 595,

*Dam*, Dynevor Pride 1722.

**DYNEVOR ZERO 3066,**

White with black points, calved January 29th, 1939 ; breeder, The Lord Dynevor ;

*Sire*, Woburn Perfection 21st 595.

*Dam*, Dynevor Narcissus 1414.

**DYNEVOR ZEST 3068,**

White with black points, calved October 25th, 1939 ; breeder, The Lord Dynevor ;

*Sire*, Woburn Perfection 21st 595,

*Dam*, Dynevor Venus 2548.

**DYNEVOR ZODIA 3070,**

White with black points, calved December 8th, 1939 ; breeder, The Lord Dynevor ;

*Sire*, Woburn Mike 5th 657,

*Dam*, Dynevor Splendid 2366.

**DYNEVOR ZONE 3072,**

White with black points, calved December 6th, 1939 ; breeder, The Lord Dynevor ;

*Sire*, Woburn Mike 5th 657,

*Dam*, Dynevor Veracity 2552.

---

**FAYGATE REFORM SAUCE 3082,**

White with black points, calved April 20th, 1940 ; breeder, Sir Claud Alexander, Bart. ;

*Sire*, Faygate Rose Prince 711,

*Dam*, Faygate Caper Sauce 2352.

**FAYGATE ROSE DAY 3084,**

White with red points, calved May 11th, 1940 ; breeder, Sir Claud Alexander, Bart. ;

*Sire*, Faygate Rose Prince 711,

*Dam*, Faygate Birthday 2348.

**THE SEDGEMERE HERD**

**Owner—SAM WOODIWISS,**

Sedgemere, Great Waltham, near Chelmsford.

**BULL.****SEDGEMERE B.P. 777,**

White with black points, calved April 18th, 1939 ; breeder, Sam Woodiwiss ;

*Sire*, Solva Black Tips 641,

*Dam*, Sedgemere Patchwork 2566.

**COWS.****SEDGEMERE ASTRAL 3086,**

White with black points, calved May 28th, 1939 ; breeder, Sam Woodiwiss ;

*Sire*, Solva Black Tips 641,

*Dam*, Sedgemere Alexandra 2770.

**SEDGEMERE BLACKFOOT 3088,**

Black with white, calved July 1st, 1939 ; breeder, Sam Woodiwiss ;

*Sire*, Solva Black Tips 641,

*Dam*, Sedgemere Fleetfoot 2772 I.F.S.

**SEDGEMERE LOUISA 3090,**

White with black points, calved September 11th, 1939 ; breeder, Sam Woodiwiss ;

*Sire*, Bawdeswell Blackball 747,

*Dam*, Sedgemere Lucy 3048.

**SEDGEMERE MILDRED 3092 I.F.S.,**

White with black points, calved October 19th, 1939; breeder, Sam Woodiwiss;

*Sire*, Solva Black Tips 641,

*Dam*, Sussie.

**SEDGEMERE PEARL 13th 3094,**

White with black points, calved May 18th, 1939; breeder Sam Woodiwiss;

*Sire*, Solva Black Tips 641,

*Dam*, Sedgemere Pearl 12th 2568.

**SEDGEMERE PEARLINA 4th 3096,**

White with black points, calved February 18th, 1939; breeder Sam Woodiwiss;

*Sire*, Solva Black Tips 641,

*Dam*, Sedgemere Pearlina 2nd 2570.

**THE STUMBLEHOLME HERD**

Owner—JAMES A. FARMER,

Stumbleholme, Ifield, Near Crawley.

## COWS.

**STUMBLEHOLME BUDDING STAR 3098,**

White with black points, calved February 2nd, 1940; breeder, Sir Claud Alexander, Bart.;

*Sire*, Faygate Rose Prince 711,

*Dam*, Faygate Film Star 2832.

**STUMBLEHOLME CROWN JEWEL 3100 I.F.S.**

White with red points, calved April 1st, 1940; breeder, James A. Farmer;

*Sire*, Stumbleholme Astronomer Royal 715,

*Dam*, Jewel.

**STUMBLEHOLME GOLDEN STAR 3102 I.F.S.**

White with black points, calved August 20th, 1940; breeder, James A. Farmer;

*Sire*, Stumbleholme Astronomer Royal 715,

*Dam*, Marigold.

**STUMBLEHOLME ROYAL SAUCE 3104,**

White with red points, calved February 1st, 1940; breeder, Sir Claud Alexander, Bart.;

*Sire*, Faygate Rose Prince 711,

*Dam*, Faygate Parsley Sauce 2834.

**STUMBLEHOLME SUNFLOWER 3106 I.F.S.**

White with red points, calved April, 1940; breeder, James A. Farmer;  
*Sire*, Stumbleholme Astronomer Royal 715,  
*Dam*, A Shorthorn Cow.

**THE CHARTLEY HERD (at Woburn)**

Owner—**THE DUKE OF BEDFORD**,  
 Woburn Abbey, Bletchley.

**BULLS.****WOBURN MATTHEW 3rd 779,**

White with black points, calved June 17th, 1940; breeder, The Duke of Bedford, K.G.;

*Sire*, Woburn Mike 7th 661,

*Dam*, Woburn Pam 1st 2602.

**WOBURN MATTHEW 4th 781,**

White with black points, calved June 21st, 1940; breeder, The Duke of Bedford, K.G.;

*Sire*, Woburn Mike 7th 661,

*Dam*, Woburn Penelope 1st 2876.

**WOBURN MICHAEL 3rd 783,**

White with black points, calved May 10th, 1939; breeder, The Duke of Bedford, K.G.;

*Sire*, Woburn Mike 2nd 651,

*Dam*, Woburn Buckingham 53rd 1774.

**COWS.****WOBURN BUCKINGHAM 80th 3108,**

White with black points, calved May 13th, 1939; breeder, The Duke of Bedford, K.G.;

*Sire*, Woburn Matthias 28th 505,

*Dam*, Woburn Buckingham 64th 2582.



**WOBURN BUCKINGHAM 83rd 3110,**

White with black points, calved May 9th, 1940 ; breeder, The Duke of Bedford, K.G. ;

*Sire*, Woburn Matthias 28th 505,

*Dam*, Woburn Buckingham 58th 2366.

**WOBURN PRISCILLA 2nd 3112,**

White with black points, calved May 17th, 1940 ; breeder, The Duke of Bedford, K.G. ;

*Sire*, Woburn Perfection 13th 355,

*Dam*, Woburn Pyaura 3rd 2078.

**WOBURN ROSE 1st 3114,**

White with black points, calved May 26th, 1939, ; breeder, The Duke of Bedford, K.G. ;

*Sire*, Woburn Mike 7th 661,

*Dam*, Woburn Primrose 1st 2600.

**WOBURN ROSE 2nd 3116,**

White with black points, calved June 27th, 1940 ; breeder, The Duke of Bedford, K.G. ;

*Sire*, Woburn Mike 7th 661,

*Dam*, Woburn Primrose 1st 2600.

## Register of the Polled Herds

---

**THE BAWDESWELL HERD**

Owner—MAJOR QUINTIN E. GURNEY,

Bawdeswell Hall, Norfolk.

**BULLS.****BAWDESWELL BLACK FLAG 785,**

White with black points, calved December 27th, 1939 ; breeder, Major Quintin E. Gurney ;

*Sire*, St. Osyth Olaf 705,

*Dam*, Bawdeswell Black Bess 2626.

**BAWDESWELL BOB 787,**

White with black points, calved May 24th, 1939 ; breeder, Major Quintin E. Gurney ;

*Sire*, St. Osyth Olaf 705;

*Dam*, Bawdeswell Boadicea 4th 2628.

**BAWDESWELL CHRISTO 789,**

White with black points, calved March 12th, 1939 ; breeder, Major Quintin E. Gurney ;

*Sire*, Bolwick Pirate 627,

*Dam*, Bawdeswell Counterfoil 1814.

**BAWDESWELL COMA 791,**

White with black points, calved November 13th, 1940 ; breeder, Major Quintin E. Gurney ;

*Sire*, Bawdeswell General 759,

*Dam*, Bawdeswell Conway 2110.

**BAWDESWELL COUNT 3rd 793,**

White with black points, calved March 9th, 1940; breeder, Major Quintin E. Gurney;

*Sire*, Bolwick Hermes 539,

*Dam*, Bawdeswell Countess 3rd 2412.

**BAWDESWELL CRIMP 795,**

White with black points, calved April 11th, 1939; breeder, Major Quintin E. Gurney;

*Sire*, St. Osyth Olaf 705,

*Dam*, Bawdeswell Cyclamen 2910.

**BAWDESWELL DANIEL 797,**

White with black points, calved November 29th, 1939; breeder, Major Quintin E. Gurney;

*Sire*, St. Osyth Olaf 705,

*Dam*, Bawdeswell Daffy 2656.

**BAWDESWELL MISTY 799,**

White with black points, calved August 11th, 1940; breeder, Major Quintin E. Gurney;

*Sire*, Bolwick Hermes 539,

*Dam*, Bawdeswell Minnie 2132 I.F.S.

## COWS.

**BAWDESWELL BABS 3118,**

White with black points, calved December 28th, 1940; breeder, Major Quintin E. Gurney;

*Sire*, Bolwick Mercury 765,

*Dam*, Bawdeswell Bonny 2888.

**BAWDESWELL BLACK ADDER 3120,**

White with black points, calved April 2nd, 1939; breeder, Major Quintin E. Gurney;

*Sire*, St. Osyth Olaf 705,

*Dam*, Bawdeswell Black Onyx 2884.

**BAWDESWELL BLACK AVIS 3122,**

White with black points, calved April 18th, 1940; breeder, Major Quintin E. Gurney;

*Sire*, Bawdeswell Topnotch 763,

*Dam*, Bawdeswell Black Onyx 2884.

**BAWDESWELL BLACKBURN 3124,**

White with black points, calved August 9th, 1939; breeder, Major Quintin E. Gurney;

*Sire*, Bolwick Pirate 627,

*Dam*, Bawdeswell Black Pearl 2398.

**BAWDESWELL BLACKCAP 2nd 3126,**

White with black points, calved July 13th, 1940; breeder, Major Quintin E. Gurney;

*Sire*, Bolwick Hermes 539,

*Dam*, Bawdeswell Black Diamond 2396.

**BAWDESWELL BLACK CAT 3128,**

White with black points, calved September 2nd, 1939; breeder, Major Quintin E. Gurney;

*Sire*, St. Osyth Olaf 705,

*Dam*, Bawdeswell Black Diamond 2396.

**BAWDESWELL BUNT 3130,**

White with black points, calved May 16th, 1939; breeder, Major Quintin E. Gurney;

*Sire*, Bawdeswell Citizen 611,

*Dam*, Bawdeswell Bunt 2400.

**BAWDESWELL CHATTERBOX 3132,**

White with black points, calved May 14th, 1939; breeder, Major Quintin E. Gurney;

*Sire*, St. Osyth Olaf 705,

*Dam*, Bawdeswell Chat 2630.

**BAWDESWELL CHIME 3134,**

White with black points, calved September 8th, 1939; breeder, Major Quintin E. Gurney;

*Sire*, Bolwick Pirate 627,

*Dam*, Bawdeswell Cornbunting 2nd 2644.

**BAWDESWELL CHRISTINE 3136,**

White with black points, calved April 6th, 1940; breeder, Major Quintin E. Gurney;

*Sire*, Bawdeswell Topnotch 763,

*Dam*, Bawdeswell Counterfoil 1814.

**BAWDESWELL CHROMO 3138,**

White with black points, calved February 2nd, 1940; breeder, Major Quintin E. Gurney;

*Sire*, Bawdeswell General 759,

*Dam*, Bawdeswell Cinnamon 2636.

**BAWDESWELL CILLA 3140,**

White with black points, calved June 7th, 1939; breeder Major Quintin E. Gurney;

*Sire*, Bolwick Pirate 627,

*Dam*, Bawdeswell Catmint 1204.

**BAWDESWELL CLARA 3142,**

White with black points, calved February 15th, 1940; breeder, Major Quintin E. Gurney;

*Sire*, Bawdeswell General 759,

*Dam*, Bawdeswell Cloudlet 2640.

**BAWDESWELL CLARE 3144,**

White with black points, calved February 8th, 1939; breeder, Major Quintin E. Gurney;

*Sire*, St. Osyth Olaf 705,

*Dam*, Bawdeswell Cloudlet 2640.

**BAWDESWELL CORA 3146,**

White with black points, calved April 27th, 1940; breeder, Major Quintin E. Gurney;

*Sire*, Bawdeswell General 759,

*Dam*, Bawdeswell Counteract 2648.

**BAWDESWELL CRANBERRY 3146,**

White with black points, calved February 11th, 1939; breeder, Major Quintin E. Gurney;

*Sire*, Bolwick Pirate 627,

*Dam*, Bawdeswell Cynthia 2654.

**BAWDESWELL CREAM 3150,**

White with black points, calved August 3rd, 1940; breeder, Major Quintin E. Gurney;

*Sire*, Bawdeswell Bunny 749,

*Dam*, Bawdeswell Crane 2908.

**BAWDESWELL CYNIC 3152,**

White with black points, calved May 19th, 1940; breeder, Major Quintin E. Gurney;

*Sire*, Bolwick Hermes 539,

*Dam*, Bawdeswell Cissie 2104.

**BAWDESWELL DESPITE 3154 (Twin to a bull),**

White with black points, calved February 5th, 1939; breeder, Major Quintin E. Gurney;

*Sire*, Bawdeswell Counterpoint 679,

*Dam*, Bolwick Deborah 1862.

**BAWDESWELL DOROTHY 3156,**

White with black points, calved September 9th, 1939; breeder, Major Quintin E. Gurney;

*Sire*, St. Osyth Olaf 705,

*Dam*, Bawdeswell Destor 2922.

**BAWDESWELL DOVELLA 3158,**

White with black points, calved November 29th, 1940; breeder, Major Quintin E. Gurney;

*Sire*, Bawdeswell Bunny 749,

*Dam*, Bawdeswell Dove 2nd 2426.

**BAWDESWELL DOVETAIL 3160,**

White with black points, calved November 9th, 1939; breeder, Major Quintin E. Gurney;

*Sire*, St. Osyth Olaf 705,

*Dam*, Bawdeswell Dove 2nd 2426.

**BAWDESWELL DRACO 3162,**

White with black points, calved April 7th, 1940, breeder, Major Quintin E. Gurney;

*Sire*, Bawdeswell General 759,

*Dam*, Bawdeswell Delia 2656.

**BAWDESWELL DUCHESS 3164,**

White with black points, calved June 5th, 1939; breeder, Major Quintin E. Gurney;

*Sire*, St. Osyth Olaf 705,

*Dam*, Bawdeswell Dustbin 2662.

**BAWDESWELL DWARF 3166,**

White with black points, calved May 7th, 1939; breeder, Major Quintin E. Gurney;

*Sire*, Bolwick Pirate 627,

*Dam*, Bawdeswell Delia 2658.

**BAWDESWELL GONDOLA 3168,**

White with black points, calved February 12th, 1940; breeder, Major Quintin E. Gurney;

*Sire*, St. Osyth Olaf 705,

*Dam*, Bawdeswell Geranium 2428.

**BAWDESWELL GOSSIPER 3170,**

White with black points, calved April 27th, 1939; breeder, Major Quintin E. Gurney;

*Sire*, Bolwick Hermes 539,

*Dam*, Bawdeswell Gallardia 2668.

**BAWDESWELL GREYLAG 3172,**

White with black points, calved February 13th, 1940; breeder, Major Quintin E. Gurney;

*Sire*, St. Osyth Olaf 705,

*Dam*, Bawdeswell Gentian 2670.

**BAWDESWELL GREYLING 3174,**

White with black points, calved March 12th, 1939; breeder, Major Quintin E. Gurney;

*Sire*, Bawdeswell Consul 677,

*Dam*, Bawdeswell Gentian 2670.

**BAWDESWELL IBEX 2nd 3176,**

White with black points, calved October 19th, 1940; breeder, Major Quintin E. Gurney;

*Sire*, Bolwick Hermes 539,

*Dam*, Bawdeswell Ivy 1834 I.F.S.

**BAWDESWELL IBIS 2nd 3178,**

White with black points, calved October 18th, 1939; breeder, Major Quintin E. Gurney;

*Sire*, Bawdeswell Consul 677,

*Dam*, Bawdeswell Ivy 1834 I.F.S.

**BAWDESWELL MERRYVALE 3180,**

White with black points, calved March 5th, 1939; breeder, Major Quintin E. Gurney;

*Sire*, Bawdeswell Counterpoint 679,

*Dam*, Bawdeswell Mist 2440.

**BAWDESWELL MINNA 3182,**

White with black points, calved July 27th, 1939; breeder, Major Quintin E. Gurney;

*Sire*, Bolwick Pirate 627,

*Dam*, Bawdeswell Minnie 2132 I.F.S.

**BAWDESWELL NAN 3184,**

White with black points, calved August 17th, 1940; breeder, Major Quintin E. Gurney;

*Sire*, Bawdeswell Bunny 749,

*Dam*, Bawdeswell Nicotine 2950.

**BAWDESWELL NORA 3186,**

White with black points, calved September 27th, 1939; breeder, Major Quintin E. Gurney;

*Sire*, Bawdeswell Consul 677,

*Dam*, Bawdeswell Narcissus 2680.

**BAWDESWELL SNOWCAP 3188,**

White with black points, calved February 18th, 1939; breeder, Major Quintin E. Gurney;

*Sire*, Bawdeswell Counterpoint 679,

*Dam*, Bawdeswell Snowbird 3rd 2688.

**BAWDESWELL SPANISH 3190,**

White with black points, calved September 18th, 1939; breeder, Major Quintin E. Gurney;

*Sire*, St. Osyth Olaf 705,

*Dam*, Bawdeswell Spindle 2690.

**BAWDESWELL SPINNER 3192,**

White with black points, calved July 11th, 1939; breeder, Major Quintin E. Gurney;

*Sire*, Bolwick Hermes 539,

*Dam*, Bawdeswell Spinet 1846.

**THE BOLWICK HERD.**

Owners—WALTER BUXTON and C. R. BIRKBECK,

Bolwick, Marsham, Norwich.

**BULL.****BOLWICK WINSTON 801,**

White with black points, calved June 24th, 1940; breeders, Buxton & Birkbeck;

*Sire*, Bolwick Defiance 687,

*Dam*, Bolwick Winnie 2470.

**COWS.****BOLWICK DAPPLE 3194,**

White with black spots, calved October 11th, 1940; breeders, Buxton & Birkbeck;

*Sire*, Bolwick Defiance 687,

*Dam*, Bolwick Dally 1858.

**BOLWICK DAYLIGHT 3196,**

White with black points, calved October 30th, 1939; breeders, Buxton & Birkbeck;

*Sire*, Bolwick Primate 693,

*Dam*, Bolwick Dawn B.12 G.U.R.

**BOLWICK DIONE 3198,**

White with black points, calved March 21st, 1939; breeders, Buxton & Birkbeck;

*Sire*, Bolwick Defiance 687,

*Dam*, Bolwick Diana B.6 G.U.R.

**BOLWICK DREAM 3200,**

White with black spots, calved December 31st, 1940; breeders, Buxton & Birkbeck;

*Sire*, Bolwick Defiance 687,

*Dam*, Bolwick Dryad 2710.

**BOLWICK DUNLIN 3202,**

White with black points, calved February 3rd, 1939; breeders, Buxton & Birkbeck;

*Sire*, Bolwick Defiance 687,

*Dam*, Bolwick Dryad 2710.

**BOLWICK FLORA 3204,**

Black and white, calved May 12th, 1940; breeders, Buxton & Birkbeck;

*Sire*, Bolwick Defiance 687,

*Dam*, Bolwick Frolic A.52 G.U.R.

**BOLWICK LINNAEA 3206,**

White with black points, calved October 22nd, 1939; breeders, Buxton & Birkbeck;

*Sire*, Bolwick Pimate 693,

*Dam*, Bolwick Lettice 2718.

**BOLWICK PRUDENCE 2nd 3208,**

White with black points, calved February 1st, 1939; breeders, Buxton & Birkbeck;

*Sire*, Bolwick Defiance 687,

*Dam*, Bolwick Prude 2722.

**BOLWICK PRUNELLA 3210,**

White with black points, calved August 16th, 1939; breeders, Buxton & Birkbeck;

*Sire*, Bolwick Defiance 687,

*Dam*, Bolwick Primrose 2168.

**BOLWICK SALSIFY 3212,**

White with black points, calved July 3rd, 1939; breeders, Buxton & Birkbeck;

*Sire*, Bolwick Pimate 693,

*Dam*, Bolwick Sally 2464.

**BOLWICK SALSIFY 2nd 3214,**

White with black points, calved May 14th, 1940; breeders, Buxton & Birkbeck;

*Sire*, Bolwick Pimate 693,

*Dam*, Bolwick Sally 2464.

**BOLWICK WALEFIN 3216,**

White with black points, calved May 13th, 1940; breeders, Buxton & Birkbeck;

*Sire*, Bolwick Defiance 687,

*Dam*, Bolwick Walnut 2466.

**BOLWICK WISHFUL 3218,**

White with black points, calved July 1st, 1939; breeders, Buxton & Birkbeck;

*Sire*, Bolwick Defiance 687,

*Dam*, Bolwick Walnut 2466.

## THE EMERY DOWN HERD

Owner—D. P. TRENCH, Esq.,  
Yew Tree Farm, Emery Down, Lyndhurst, Hants.

COW.

### EMERY DOWN SNOW WHITE 3220,

White with black points, calved September 15th, 1939; breeder,  
D. P. Trench;

*Sire*, Bolwick Defiance 687,

*Dam*, Bolwick Fescue 2716 I.F.S.

---

## THE FAYGATE HERD

Owner—SIR CLAUD ALEXANDER, Bart.,  
Faygate Wood, Faygate, Sussex.

COW.

**FAYGATE MULBERRY 3222,**

White and red, calved January 17th, 1940; breeder, Sir Claud Alexander, Bart.

*Sire*, Faygate Rose Prince 711,

*Dam*, Faygate Strawberry 3012.

---



**THE KELMARSH HERD**

Owner—**COLONEL C. G. LANCASTER, M.P.,**

Kelmarsh Hall, Northampton.

**BULLS.****KELMARSH CAYZER 803,**

White with black points, calved September 15th, 1939 ; breeder,  
Major Quintin E. Gurney ;

*Sire*, St. Osyth Olaf 705,

*Dam*, Bawdeswell Cicely 2634.

**KELMARSH PRINCE 2nd 805,**

White with black points, calved January 29th, 1939 ; breeder,  
Col. C. G. Lancaster, M.P. ;

*Sire*, Bawdeswell Swan 619,

*Dam*, St. Osyth Nora 2762.

**KELMARSH SNOWDON 807,**

White with black points, calved May 10th, 1940 ; breeder, Colonel  
C. G. Lancaster, M.P. ;

*Sire*, Bawdeswell Swan 619,

*Dam*, Kelmarsh Snowdrop 9th 2480.

**COWS.****KELMARSH ELLA 7th 3224,**

White with black points, calved June 28th, 1939 ; breeder, Colonel  
C. G. Lancaster, M.P. ;

*Sire*, Bawdeswell Swan 619,

*Dam*, Kelmarsh Ella 4th 2472.

**KELMARSH ELLA 8th 3226,**

White with black points, calved April 8th, 1940 ; breeder, Colonel C. G. Lancaster, M.P. ;

*Sire*, Bawdeswell Swan 619,

*Dam*, Kelmarsh Ella 4th 2472.

**KELMARSH FUCHSIA 10th 3228 (Twin),**

White with black points, calved November 23rd, 1940 ; breeder, Colonel C. G. Lancaster, M.P. ;

*Sire*, Bawdeswell Swan 619,

*Dam*, Kelmarsh Fuchsia 8th 3018.

**KELMARSH NORA 2nd 3230,**

White with black points, calved February 20th, 1940 ; breeder, Colonel C. G. Lancaster, M.P. ;

*Sire*, Bawdeswell Swan 619,

*Dam*, St. Osyth Nora 2762.

**KELMARSH PANSY 10th 3232,**

White with black points, calved May 22nd, 1939 ; breeder, Colonel C. G. Lancaster, M.P. ;

*Sire*, Bawdeswell Swan 619,

*Dam*, Kelmarsh Pansy 3rd 996.

**KELMARSH PANSY 11th 3234,**

White with black points, calved June 12th, 1939 ; breeder, Colonel C. G. Lancaster, M.P. ;

*Sire*, Bawdeswell Swan 619,

*Dam*, Kelmarsh Pansy 5th 2476.

**KELMARSH PANSY 12th 3236,**

White with black points, calved August 5th, 1939 ; breeder, Colonel C. G. Lancaster, M.P. ;

*Sire*, Bawdeswell Swan 619,

*Dam*, Kelmarsh Pansy 6th 2746.

**KELMARSH PANSY 13th 3238 (Twin),**

White with black points, calved March 19th, 1940 ; breeder, Colonel C. G. Lancaster, M.P. ;

*Sire*, Bawdeswell Swan 619,

*Dam*, Kelmarsh Pansy 4th 2230.

**KELMARSH POPPY 6th 3240,**

White with black points, calved August 5th, 1939 ; breeder, Colonel C. G. Lancaster, M.P. ;

*Sire*, Bawdeswell Swan 619,

*Dam*, Kelmarsh Poppy 3rd 2748.

**KELMARSH PRIMROSE 10th 3242,**

White with black points, calved May 1st, 1939 ; breeder, Colonel C. G. Lancaster, M.P. ;

*Sire*, Bawdeswell Swan 619,

*Dam*, Kelmarsh Primrose 8th 2478.

**KELMARSH PRIMROSE 11th 3244,**

White with black points, calved March 25th, 1940 ; breeder, Colonel C. G. Lancaster, M.P. ;

*Sire*, Bawdeswell Swan 619,

*Dam*, Kelmarsh Primrose 8th 2478.

**KELMARSH PRIMROSE 12th 3246,**

White with black points, calved March 28th, 1940 ; breeder, Colonel C. G. Lancaster, M.P. ;

*Sire*, Bawdeswell Swan 619,

*Dam*, Kelmarsh Primrose 7th 2234.

**KELMARSH SNOWDROP 16th 3248,**

White with black points, calved May 28th, 1939 ; breeder, Colonel C. G. Lancaster, M.P. ;

*Sire*, Bawdeswell Swan 619,

*Dam*, Kelmarsh Snowdrop 9th 2480.

**KELMARSH SNOWDROP 17th 3250,**

White with black points, calved November 25th, 1939; breeder,  
Colonel C. G. Lancaster, M.P.;

*Sire*, Bawdeswell Swan 619,

*Dam*, Kelmarsh Snowdrop 11th 2752.

**KELMARSH SNOWDROP 18th 3252,**

White with black points, calved February 16th, 1940; breeder,  
Colonel C. G. Lancaster, M.P.;

*Sire*, Bawdeswell Swan 619,

*Dam*, Kelmarsh Snowdrop 11th 2752.

**KELMARSH TOPSY 3254,**

White with black points, calved October 21st, 1940; breeder,  
Colonel C. G. Lancaster, M.P.;

*Sire*, Bawdeswell Swan 619,

*Dam*, Kelmarsh Topsy 2nd 1608.

---

**THE ST. OSYTH HERD**

Owner—BRIGADIER-GENERAL K. KINCAID SMITH,  
C.B., C.M.G., D.S.O.,

St. Osyth Priory, Clacton-on-Sea.

## COWS.

**ST. OSYTH RACHEL 3256,**

White with black points, calved January 23rd, 1940; breeder,  
Brig.-General K. Kincaid Smith, C.B.;

*Sire*, St. Osyth Jock 769 I.F.S.,

*Dam*, St. Osyth Lydia 2512.

**ST. OSYTH RASPBERRY 3258,**

White with red points, calved February 7th, 1940; breeder, Brig.-  
General K. Kincaid Smith, C.B.;

*Sire*, St. Osyth Jock 769 I.F.S.

*Dam*, St. Osyth Larkspur 2496.

**ST. OSYTH RHODA 3260,**

White with black points, calved January 2nd, 1940; breeder,  
Brig.-General K. Kincaid Smith, C.B.;

*Sire*, St. Osyth Jock 769 I.F.S.,

*Dam*, St. Osyth Molly 2516.

---

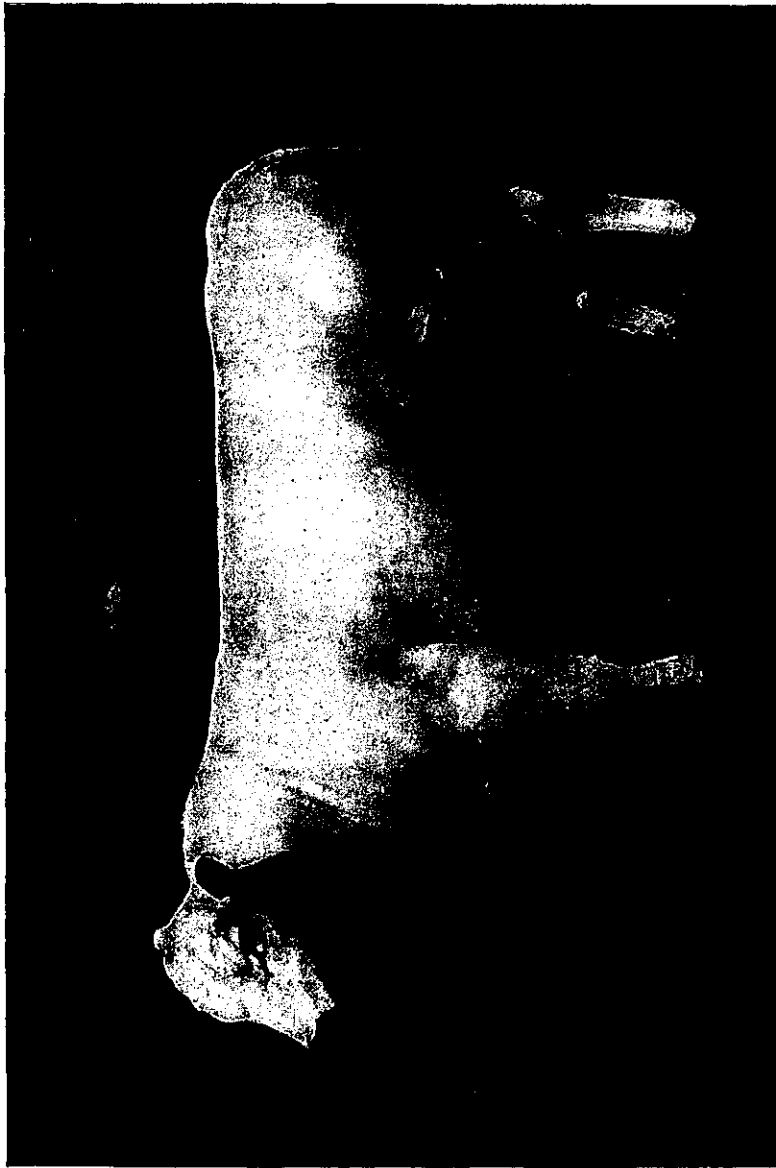


Photo by E. W. Copnall, Horsham.

BOLWICK PRIMATE 693.

Owner, James A. Farmer. Breeders, Buxton and Birkbeck.

## THE STUMBLEHOLME HERD

Owner—JAMES A. FARMER,

Stumbleholme, Ifield, Near Crawley.

### COWS.

#### STUMBLEHOLME CHARLESTON 3262 (Twin),

White with black points, calved December 27th, 1938; breeder, James A. Farmer;

*Sire*, Bawdeswell Black Boy 671,

*Dam*, Bawdeswell Quickstep 2684.

#### STUMBLEHOLME COUNTESS 3264,

White with black points, calved October 10th, 1938; breeder, James A. Farmer;

*Sire*, Bawdeswell Black Boy 671,

*Dam*, Bawdeswell Contessa 2642.

#### STUMBLEHOLME DAWN 3266 I.F.S.,

White with black points, calved November, 1939; breeder, James A. Farmer;

*Sire*, A Shorthorn bull,

*Dam*, Bawdeswell Sunset 2696.

#### STUMBLEHOLME JAZZ 3268 (Twin),

White with black points, calved December 27th, 1938; breeder, James A. Farmer;

*Sire*, Bawdeswell Black Boy 671,

*Dam*, Bawdeswell Quickstep 2684.

**THE WOODBASTWICK HERD**

**Owner—JOHN CATOR,**  
Woodbastwick Hall, Norwich.

**BULL.****WOODBASTWICK JUNKER 809,**

White with black points, calved May 22nd, 1939; breeder, John Cator;

*Sire*, St. Osyth Leo 771 I.F.S.,

*Dam*, Woodbastwick Ladybird 2nd 2786.

**COWS.****WOODBASTWICK BEGUM 2nd 3270, .**

White with black points, calved November 4th, 1940; breeder, John Cator;

*Sire*, St. Osyth Leo 771 I.F.S.,

*Dam*, Woodbastwick Begum 2518.

**WOODBASTWICK BIRDLIME 3rd 3272, .**

White with black points, calved January 26th, 1940; breeder, John Cator;

*Sire*, St. Osyth Leo 771 I.F.S.,

*Dam*, Woodbastwick Birdlime 2280.

**WOODBASTWICK JUDITH 3274, .**

White with black points, calved February 20th, 1940; breeder, John Cator;

*Sire*, St. Osyth Leo 771 I.F.S.,

*Dam*, Woodbastwick Juno 2nd 2782 I.F.S.



Small, illegible marks or characters in the top right corner, possibly a stamp or page number.

**WOODBASTWICK JUNIPER 2nd 3276, -**

White with black points, calved May 9th, 1939; breeder, John Cator;

*Sire*, St. Osyth Leo 771 I.F.S.,

*Dam*, Ranworth Juniper 2488.

**WOODBASTWICK JUSTICE 3278, -**

White with black points, calved December 3rd, 1940; breeder, John Cator;

*Sire*, St. Osyth Leo 771 I.F.S.,

*Dam*, Woodbastwick Joyce 5th 2528.

**WOODBASTWICK LADYLIKE 3280, -**

White with black points, calved January 3rd, 1940; breeder, John Cator;

*Sire*, St. Osyth Leo 771 I.F.S.,

*Dam*, Woodbastwick Ladybird 3rd 3052 I.F.S.

**WOODBASTWICK LADYLOVE 3282, -**

White with black points, calved April 5th, 1940; breeder, John Cator;

*Sire*, St. Osyth Leo 771 I.F.S.,

*Dam*, Woodbastwick Ladybird 2nd 2786.

**WOODBASTWICK SNOWBERRY 3284,**

White with black points, calved December 28th, 1939; breeder, John Cator;

*Sire*, St. Osyth Leo 771 I.F.S.,

*Dam*, Woodbastwick Snowdrop 2nd 3054 I.F.S.

**PREFIXES GRANTED BY THE PARK CATTLE SOCIETY.**

Amphill	...	...	Wingfield, Sir Anthony.
Bawdeswell	...	...	Gurney, Major Q. E.
Bolwick	...	...	Walter Buxton and C. R. Birbeck.
Cadzow	...	...	Hamilton, The Duke of
Chillingham	...	...	Tankerville, The Earl of
Dynevor	...	...	Dynevor, The Lord
Emery Down	...	...	D. P. Trench.
Faygate	...	...	Alexander, Sir Claud, Bart.
Kelmarsh	...	...	Lancaster, Captain C. G., M.P.
Littlestoke	...	...	Ducker, N. B.
Ranworth	...	...	Cator, Captain H. J., M.C.
St. Osyth	...	...	Kincaid Smith, Brigadier-General K., C.B., C.M.G., D.S.O.
Sedgemere	...	...	Woodiwiss, Sam.
Solva	...	...	Howell, Captain J. H., M.C.
Stumbleholme	...	...	Farmer, J. A.
Takeley	...	...	Askew, T. C.
Vaynol	...	...	Assheton-Smith, Sir Michael, Bart.
Woburn	...	...	Bedford, The Duke of, K.G.
Woodbastwick	...	...	Cator, John.

**TRANSFERS.****HORNED.****BULLS.**

Woburn Prince 6th 745, from the Duke of Bedford, K.G., to the Lord Dynevor.

**Cows.**

Faygate Caper Sauce 2nd 3076, from Sir Claud Alexander, Bart., to D. P. Trench.

Woburn Pansy 2604, from the Duke of Bedford, K.G., to Sam Woodiwiss.

**POLLED.****BULLS.**

Bawdeswell Crimp 795, from Major Quintin E. Gurney to Sir Claud Alexander, Bart.

Bawdeswell Topnotch 763, from Major Quintin E. Gurney to Colonel C. G. Lancaster.

Bolwick Pimate 693, from Buxton & Birkbeck to James A. Farmer.

Bolwick Soldier 767, from Buxton & Birkbeck to Major Quintin E. Gurney.

Kelmarsh Prince 2nd 805, from Colonel C. G. Lancaster, M.P., to D. P. Trench.

**Cows.**

Bawdeswell Celia 2392, from Major Quintin E. Gurney to D. P. Trench.

Bawdeswell Citron 2896, from Major Quintin E. Gurney to D. P. Trench.

Bawdeswell Cottage Maid 2906, from Major Quintin E. Gurney to D. P. Trench.

Bawdeswell Dulcie 2930, from Major Quintin E. Gurney to D. P. Trench.

Bawdeswell Generous 2936, from Major Quintin E. Gurney to D. P. Trench.

Bolwick Bulrush 2966, from Buxton & Birkbeck to D. P. Trench.

Bolwick Fescue 2716 I.F.S., from Buxton & Birkbeck to D. P. Trench.

Bolwick Primula 2988, from Buxton & Birkbeck to D. P. Trench.

Bolwick Prodigy 2992, from Buxton & Birkbeck to D. P. Trench.

Faygate Snow Queen 3010, from Sir Claud Alexander, Bart., to D. P. Trench.