



WOBURN MATTHIAS II.

3rd Leicester (R.A.S.E.), 1924. The property of the Duke of Bedford, K.G.

Since going to press he has won 1st Chester (R.A.S.E.), 1925.

# THE PARK CATTLE SOCIETY'S HERD BOOK.

---

VOLUME IV.

---

1924.

Printed by:  
W. E. BAXTER LTD., PRINTERS, 35, HIGH STREET.

# THE PARK CATTLE SOCIETY.

**Patron :**

THE EARL OF TANKERVILLE.

**President :**

THE DUKE OF BEDFORD, K.G.

**Vice-President :**

THE DUKE OF HAMILTON.

**Council :**

SIR CLAUD ALEXANDER, Bart.	MRS. QUINTIN GURNEY.
C. R. BIRKBECK.	MRS. LANCASTER.
A. H. L. BOHRMANN.	A. E. MACLEOD.
JOHN CATOR.	FRANK P. MATTHEWS.
CAPTAIN H. J. CATOR, M.C.	COL. SIR WALTER SHAKERLEY,
THE LORD DYNEVOR.	Bart., C.B.E.
BRIG.-GEN. K. KINCAID SMITH.	

**Executive Committee :**

SIR CLAUD ALEXANDER, BART.	THE LORD DYNEVOR.
A. H. L. BOHRMANN.	MAJOR GURNEY.
JOHN CATOR.	MRS. QUINTIN GURNEY.
FRANK P. MATTHEWS.	

**Hon Treasurer :** MAJOR GURNEY.

**Secretary :** EVELYN R. SANDWITH,  
The Studio,  
North Holmwood,  
Dorking.

# THE PARK CATTLE SOCIETY.

## LIST OF MEMBERS.

- Alexander, Lady, Faygate Wood, Sussex.  
 Alexander, Sir Claud, Bart., Faygate Wood, Sussex.  
 Bedford, The Duke of, K.G., Woburn Abbey, Bletchley.  
 Birkbeck, C. R., Horstead House, Norwich.  
 Bohrmann, A. H. L., Winkhurst Green, Ide Hill, Sevenoaks.  
 Buxton, Walter, Queen Anne's Mansions, London, S.W.  
 Cator, John, Woodbastwick Hall, Norwich.  
 Cator, Captain H. J., M.C., Ranworth Hall, Norwich.  
 Cocks, Alfred Heneage, Poynetts, Skirmett, near Henley-on-Thames.  
 Duff, Sir Michael, Bart., Vaynol Park, Bangor, N. Wales.  
 Dynevor, The Lord, Dynevor Castle, Llandilo, S. Wales.  
 Gurney, Major Quintin, Bawdeswell Hall, Norfolk.  
 Gurney, Mrs. Richard, Northrepps Hall, Norwich.  
 Hamilton, The Duke of, Hamilton Palace, Lanarkshire.  
 Howell, Captain J. H., Trewellwell, Solva R.S.O., Pembrokeshire.  
 Jobling, Mrs. R. L., Higham Dykes, Newcastle-on-Tyne.  
 Kincaid Smith, Brigadier-General K., The Priory, St. Osyth, Colchester.  
 Lancaster, Mrs., Kelmars Hall, Northampton.  
 Leverhulme, The Viscount, The Bungalow, Rivington, nr. Horwich, Lancashire. Communications to A. E. Newton, Lever House, E.C. 4.  
 MacLeod, A. E., Willow Croft, Stamford Road, Alderley Edge.  
 Matthews, Frank P., 27, Cavendish Square, London, W. 1.  
 Sanders, George F., Holmwood Farm, North Holmwood, Dorking.  
 Shakerley, Lady, Somerford Park, Congleton.  
 Shakerley, Col. Sir Walter, Bart., C.B.E., Somerford Park, Congleton.  
 Silley, John H., Theydon Grove, Epping.  
 Tabor, Colonel J. C., Gifford's Hall, Stoke-by-Nayland, Suffolk.  
 Woodiwiss, Major E. Sydney, Woodrooffe, Great Waltham, near Chelmsford.  
 Woodiwiss, Sam, Graveleys, Great Waltham, near Chelmsford.

## PREFACE.

The census in this, the fourth, volume of the Herd Book, consists of 39 bulls and 129 cows.

In comparing these numbers with the third volume there appears to be a steady increase, the figures therein contained showing 20 bulls and 95 cows.

Good progress is also exhibited in the number of transfers, there are in this volume 50 against 12 in Volume III.

Three herds will be absent from future volumes: the Blickling herd, which has been dispersed; the Rivington Herd, owing to the death of Lord Leverhulme; and the Woodrooffe Herd, which has been disposed of by Major E. Sydney Woodiwiss. But these will be replaced by the following herds, which appear for the first time in the present volume: the Giffords Herd, owned by Colonel J. C. Tabor; the Higham Herd, the property of Mrs. R. L. Jobling; the Sedgemere Herd belonging to Mr. Sam Woodiwiss, and the Theydon Herd of Mr. John H. Silley.

There are also two herds in process of formation, the property of Captain H. J. Cator, M.C., and Mr. George F. Sanders.

The numbers of the wild herds remain nearly stationary, showing an increase of two compared with Volume III.

It is satisfactory to record that a large proportion of the ancient Blickling Herd has passed into the hands of Major Q. E. Gurney and Messrs. Buxton and Birkbeck.

A pleasing feature was the excellent entry obtained for the Royal Show at Chester, which augurs well for the future progress of the breed.

An outstanding event also occurred in the Norfolk Milk Recording Society's Small Herds Competition for the past year, the first prize being awarded to Messrs. Buxton and Birkbeck with an average yield of 10,616 lbs. per cow for five Park Cattle in competition with all other breeds.

There are few, if any breeds, which can vie with this record, more especially when the proportion regarding numbers is taken into consideration; there are not 500 head in the country, and the Herd Book was only started in 1918.

This should stimulate a greater interest in this ancient race, when its sterling qualities become more generally known, and so attract a further increase in membership. Once this desirable object has been achieved, Park Cattle will doubtless take their proper place as one of the foremost breeds in Great Britain.

EVELYN R. SANDWITH,  
*Secretary.*

Notes on the Numbers, etc., of the Herds.

---

## HORNED HERDS.

---

### THE CADZOW HERD.

Owner : The Duke of Hamilton, Hamilton Palace, Lanarkshire.

This herd shows a slight increase ; it consists of 24 head, composed of 4 bulls, 13 cows and 7 heifer calves ; this compares with 20 head in Volume III.

---

### THE CHARTLEY HERD (at Woburn).

Owner : The Duke of Bedford, K.G., Woburn Abbey, Bletchley.

A notable increase is to be recorded compared with Volume III. The census of the herd at that time was altogether 28, namely 4 bulls, 22 cows and heifers, and 2 bull calves ; the number has now reached a total of 40, namely 7 bulls, 26 cows and 7 heifers.

---

### THE CHILLINGHAM HERD.

Owner : The Earl of Tankerville, Chillingham Castle, Belford, Northumberland.

There is a slight decrease to be recorded ; the herd now numbers 53 head, whereas it contained 57 in Volume III.

---

### THE VAYNOL HERD.

Owner : Sir Michael Duff, Bart., Vaynol Park, Bangor.

In Volume III the numbers were 15 ; there is a small increase this year as they have risen to 17, 2 bulls, 11 cows and heifers, and 4 calves.

### THE DYNEVOR HERD.

Owner : The Lord Dynevor, Dynevor Castle, Llandilo,  
S. Wales.

Another increase is to be recorded in this herd. In Volume III. it consisted of 2 bulls, 3 bull calves, 31 cows and heifers, and 5 heifer calves, a total of 41. It now contains 4 bulls, 22 cows, 14 heifers and 9 heifer calves, namely 49 altogether.

### THE FAYGATE HERD.

Owner : Sir Claud Alexander, Bart., Faygate Wood, Sussex.

The horned section of this herd contains 2 bulls, 4 cows, 4 heifers and 2 cow calves.

### THE HIGHAM HERD.

Owner : Mrs. R. L. Jobling, Higham Dykes, Newcastle-on-Tyne.

This new herd has been founded by the acquisition of a bull from Woburn and 2 cows from Faygate.

### THE POYNETTS HERD.

Owner : Alfred H. Cocks, Poynetts, Skirmett, near Henley-on-Thames.

The census for 1924 contained 3 bulls, 5 cows and 10 heifers. This compares with 2 bulls, 1 bull calf, 19 cows and heifers and 6 heifer calves in Volume III.

### THE RIVINGTON HERD.

Owner : The Viscount Leverhulme, The Bungalow, Rivington,  
nr. Horwich, Lancashire.

This herd was founded by a bull from Woburn and cows bred by Mr. Alfred H. Cocks.

### THE SOLVA HERD.

Owner : Captain J. H. Howell, Trewellwell, Solva, Pembrokeshire.

In Volume III. the herd was represented by 10 cows and heifers, and 9 calves ; it is now composed of 2 stock bulls, 11 cows, 7 2-year-olds (3 bulls, 4 heifers), 8 yearlings (2 bulls, 6 heifers). This shows an increase of 9 in this volume compared with Volume III.

### THE THEYDON HERD.

Owner : J. H. Silley, Theydon Grove, Epping.

The horned section was founded by a bull from Woburn and cows from Lord Dynevor and Mr. Alfred H. Cocks.

### THE WINKHURST HERD.

Owner : A. H. L. Bohrmann, Winkhurst Green, Ide Hill,  
near Sevenoaks.

This herd shows a slight increase ; it now contains 1 bull, 4 cows, 4 heifers, 5 calves (2 bulls, 3 cows), a total of 14. In Volume III. it consisted of 1 bull, 4 cows and 1 heifer, 3 calves (1 bull, 2 heifers), making the number 9.

## POLLED HERDS.

### THE BAWDESWELL HERD.

Owner : Major Q. E. Gurney, Bawdeswell Hall, Norfolk.

This herd numbers 35 ; it is composed of 2 bulls, 11 cows, 10 heifers, 12 calves (1 bull, 11 heifer). In Volume III. the total was 38, namely, 3 bulls and bull calves, 18 cows, 15 heifers and heifer calves.

### THE BOLWICK HERD.

Owners : Walter Buxton and C. R. Birkbeck, Horstead House, Norwich.

An increase is to be recorded ; the herd consists of 2 bulls, 5 cows, 9 heifers and 5 heifer calves, which compares with 2 bulls, 4 cows and 4 calves in Volume III.

### THE FAYGATE HERD.

Owner : Sir Claud Alexander, Bart., Faygate Wood, Sussex.

The polled section of this herd comprises 1 bull and 3 heifers.

### THE GIFFORDS HERD.

Owner : Colonel J. C. Tabor, Gifford's Hall, Stoke-by-Nayland, Suffolk.

This herd has been founded by the acquirement of 2 bulls and 3 cows from Woodbastwick, and it now consists of 3 bulls and 8 cows.

### THE HIGHAM HERD.

Owner : Mrs. R. L. Jobling, Higham Dykes, Newcastle-on-Tyne.

This was founded by the purchase of heifers from Kelmarsh.

**THE KELMARSH HERD.**

Owner : Mrs. Lancaster, Kelmarsh Hall, Northampton.

The present numbers consist of 1 bull, 14 cows, 2 heifers, 4 yearlings and 6 heifer calves, making a total of 27, which shows a decrease when compared with previous volumes.

**THE NORTHREPPS HERD.**

Owner : Mrs. Richard Gurney, Northrepps Hall, Norwich.

This herd shows an increase ; in Volume III. it numbered only 3 cows, it now comprises 1 bull, 4 cows and 1 heifer calf.

**THE ST. OSYTH HERD.**

Owner : Brig.-Gen. K. Kincaid Smith, The Priory, St. Osyth, Colchester.

There is a considerable increase in this herd ; in Volume III. it contained 1 bull, 9 cows and 4 heifers, 14 altogether ; the present numbers are 1 bull, 10 cows, 14 heifers and 3 calves, making a total of 28.

**THE SEDGEMERE HERD.**

Owner : Sam Woodiwiss, Graveleys, Great Waltham, near Chelmsford.

This herd was founded by a cow and a heifer from the Woodrooffe herd.

**THE SOMERFORD HERD.**

Owner : Col. Sir Walter Shakerley, Bart., C.B.E., Somerford Park, Congleton.

In Volume III. this herd is represented by 2 bulls and 28 females ; it now consists of 1 bull, 19 cows, 11 2-years and yearlings, and 2 calves.

**THE THEYDON HERD.**

Owner : J. H. Silley, Theydon Grove, Epping.

The polled section was founded with a bull and a cow from Somerford, and heifers from Major Gurney and Mrs. Lancaster.

**THE WOODBASTWICK HERD.**

Owner : John Cator, Woodbastwick Hall, Norwich.

The census shows a slight increase ; the present numbers are 3 bulls, 20 calves, 12 heifers and 5 heifer calves, making 40 altogether ; in Volume III. there were 3 bulls and 32 cows, heifers and cow calves.

**ERRATA.****VOLUME I.**

Page 65.—The number of Somerford Ugly Duckling is 334.

**VOLUME II.**

The entry of Woodbastwick Janitress II. was omitted, the number is 1066 in the present volume.

**VOLUME III.**

The following should have been entered as Horned :

Page 37.—Blickling Daphne 752.

Page 37.—Blickling Moss Rose 756.

The following entries are cancelled :

Page 23.—Poynetts Snowdrift 143.

Page 50.—Woodbastwick Jessel 808.

Page 31.—The number of Woburn Buckingham XV. is 706.

Page 53.—Woodrooffe Cato 179. The breeder should read John Cator;



## Register of the Horned Herds.

### THE DYNEVOR HERD.

Owner—THE LORD DYNEVOR,  
Dynevor Castle, Llandilo, S. Wales.

#### BULLS.

##### DYNEVOR CARNARVON 181,

White with black points, calved June 4, 1923 ; breeder, Sir Michael Duff, Bart. ;

*Sire*, a Vaynol bull,  
*Dam*, a Vaynol cow.

##### DYNEVOR ESSEX 183,

White with black points, calved February, 1924 ; breeder, J. H. Silley ;

*Sire*, Solva Foam 75,  
*Dam*, Faygate Elise 66 I.F.S.

##### DYNEVOR IDES 185,

White with black points, calved May 10, 1923 ; breeder, The Lord Dynevor ;

*Sire*, Dynevor Tiger Lily 69,  
*Dam*, Dynevor M.P. II. 46.

#### COWS.

##### DYNEVOR ICEBERG 822,

White with black points, calved May 3, 1923 ; breeder, The Lord Dynevor ;

*Sire*, Solva Snowstorm 79,  
*Dam*, Dynevor Alfreda 10.

##### DYNEVOR ILEX 824,

White with black points, calved May 31, 1923 ; breeder, The Lord Dynevor ;

*Sire*, Solva Snowstorm 79,  
*Dam*, Dynevor Fuchsia 420.



Park Cow, FAYGATE GARTER 68.

Milk Record 12,031½ lbs. (butter fat 5.037%) in a year with second calf.  
Owner, A. H. L. Bohrmann.

**DYNEVOR IMOGEN 826,**

White with black points, calved January 16, 1923 ; breeder, The Lord Dynevor ;

*Sire*, Solva Snowstorm 79,

*Dam*, Dynevor Alice 12.

**DYNEVOR IRENE 828,**

White, calved June 8, 1923 ; breeder, The Lord Dynevor ;

*Sire*, Solva Snowstorm 79,

*Dam*, Dynevor Daisy 36.

**DYNEVOR ISLIP 830,**

Black, calved December 14, 1923 ; breeder, The Lord Dynevor ;

*Sire*, Solva Snowstorm 79,

*Dam*, Dynevor Elsie 404.

**DYNEVOR IVY 832,**

White with black points, calved June 20, 1923 ; breeder, The Lord Dynevor ;

*Sire*, Solva Snowstorm 79,

*Dam*, Dynevor Edna 400.

**DYNEVOR JAPAN 834,**

White with black points, calved July 8, 1924 ; breeder, The Lord Dynevor ;

*Sire*, Solva Snowstorm 79,

*Dam*, Dynevor Flower 418.

**DYNEVOR JASMINE 836,**

White with a few black spots, calved February 16, 1924 ; breeder, The Lord Dynevor ;

*Sire*, Solva Snowstorm 79,

*Dam*, Dynevor Fairy 412.

**DYNEVOR JENNIE 838,**

Black, calved February 11, 1924 ; breeder, The Lord Dynevor ;

*Sire*, Solva Snowstorm 79,

*Dam*, Dynevor Cowslip 28.

**DYNEVOR JESSIE 840,**

White with black points, calved March 22, 1924 ; breeder, The Lord Dynevor ;

*Sire*, Solva Snowstorm 79,

*Dam*, Dynevor Evelyn 410.

**DYNEVOR JILL 842,**

Black, calved May 27, 1924 ; breeder, The Lord Dynevor ;

*Sire*, Solva Snowstorm 79,

*Dam*, Dynevor Pansy 52.

**DYNEVOR JOAN 844,**

White with black points, calved February 8, 1924 ; breeder, The Lord Dynevor ;

*Sire*, Solva Snowstorm 79,

*Dam*, Dynevor Flossie 416.

**DYNEVOR JONQUIL 846,**

White with black points, calved September 10, 1924 ; breeder, The Lord Dynevor ;

*Sire*, Solva Snowstorm 79,

*Dam*, Dynevor Daisy 36.

**DYNEVOR JUDY 848,**

White, calved November 4, 1924 ; breeder, The Lord Dynevor ;

*Sire*, Solva Snowstorm 79,

*Dam*, Dynevor Edith 398.

**DYNEVOR JULIET 850,**

White with black points, calved May 30, 1924 ; breeder, The Lord Dynevor ;

*Sire*, Solva Snowstorm 79,

*Dam*, Dynevor Margaret 42.

**DYNEVOR JULY 852,**

Black, calved July 22, 1924 ; breeder, The Lord Dynevor ;

*Sire*, Solva Snowstorm 79,

*Dam*, Dynevor Geranium 638.

**THE FAYGATE HERD.**

**Owner, SIR CLAUD ALEXANDER, BART.,**  
Faygate Wood, Sussex.

**BULLS.****FAYGATE ENTERPRISE 187,**

White with black points, calved November 6, 1924; breeder, Sir Claud Alexander, Bart.;

*Sire*, Faygate King of the Pippins 189,

*Dam*, Faygate Swan II. 430.

**FAYGATE KING OF THE PIPPINS 189,**

White with red points, calved January 18, 1923; breeder, Sir Claud Alexander, Bart.;

*Sire*, Woburn Young Chartley V. 101,

*Dam*, Faygate Pippin 426.

**FAYGATE ROUNDSMAN 191,**

White, calved March 3, 1924; breeder, Sir Claud Alexander, Bart.;

*Sire*, Faygate Dairyman 121,

*Dam*, Faygate Lily 70.

**FAYGATE WHOPPER 193,**

White with black points, calved May 9, 1924; breeder, Sir Claud Alexander, Bart.;

*Sire*, Woburn Young Chartley V. 101,

*Dam*, Faygate Swop II. 74.

**COWS.****FAYGATE CODLIN 854,**

White with black points, calved October 7, 1924; breeder, Sir Claud Alexander, Bart.;

*Sire*, Faygate King of the Pippins 189,

*Dam*, Faygate Cygnet 64.

**FAYGATE DAFFODIL 856,**

White with black points, calved April 13, 1923; breeder, Sir Claud Alexander, Bart.;

*Sire*, Faygate Dairyman 121,

*Dam*, Faygate Lily 70.

**FAYGATE GRACELESS 858 I.F.S.,**

White with black points, calved October 9, 1924; breeder, Sir Claud Alexander, Bart.;

*Sire*, Zoological Society's Bull by Woburn Perfection 33 out of Grey Face,

*Dam*, Faygate Grace 422.

**FAYGATE PRIMROSE DAME 860 I.F.S.,**

White with slight red points, calved June 12, 1923; breeder, Sir Claud Alexander, Bart.;

*Sire*, Dowding,

*Dam*, Faygate Primrose 428.

**FAYGATE SWOP III. 862,**

White with black points, calved May 12, 1923; breeder, Sir Claud Alexander, Bart.;

*Sire*, Woburn Young Chartley V. 101,

*Dam*, Faygate Swop II. 74.

**THE HIGHAM HERD.**

**Owner—MRS. R. L. JOBLING,**

Higham Dykes, Newcastle-on-Tyne.

**BULL.**

**HIGHAM PIP 195,**

White with black points, calved November 25, 1923; breeder, Mrs. R. L. Jobling;

*Sire*, Woburn Young Chartley V. 101 or Faygate Dairyman 121,

*Dam*, Faygate Pippin 426.

**THE POYNETTS HERD.**

**Owner—ALFRED HENEAGE COCKS,**  
Poynetts, Skirmett, near Henley-on-Thames.

**BULLS.****POYNETTS JUPITER 197,**

White with black points, calved November 29, 1922 ; breeder, Alfred H. Cocks ;

*Sire*, Faygate Brace 13,

*Dam*, Poynetts Arethusia 80.

**POYNETTS KENTIGERN 199,**

White with black points, calved December 3, 1923 ; breeder, Alfred H. Cocks ;

*Sire*, Faygate Brace 13,

*Dam*, Poynetts Aurora 82.

**POYNETTS KETIL 201,**

White with black points, calved October 4, 1923 ; breeder, Alfred H. Cocks ;

*Sire*, Solva Foam 75,

*Dam*, Poynetts Ianthe 666.

**COWS.****POYNETTS KARI 864,**

Black, calved April 13, 1923 ; breeder, Alfred H. Cocks ;

*Sire*, Faygate Brace 13,

*Dam*, Poynetts Heldig 448.

**POYNETTS KATE 866,**

Black, calved March 14, 1923 ; breeder, Alfred H. Cocks ;

*Sire*, Faygate Brace 13,

*Dam*, Poynetts Hecate 446.

**POYNETTS KESTREL 868,**

Black, calved November 5, 1923 ; breeder, Alfred H. Cocks ;

*Sire*, Faygate Brace 13,

*Dam*, Poynetts Arethusia 80.

**POYNETTS KIEREN 870,**

Black, calved January 2, 1923 ; breeder, Alfred H. Cocks ;  
*Sire*, Faygate Brace 13,  
*Dam*, Poynetts Glauce 440.

**POYNETTS KINGFISHER 872,**

Black, calved December 15, 1923 ; breeder, Alfred H. Cocks ;  
*Sire*, Faygate Brace 13,  
*Dam*, Poynetts Glauce 440.

**POYNETTS KITE 874,**

White with black points, calved August 15, 1923 ; breeder, Alfred H. Cocks ;  
*Sire*, Faygate Brace 13,  
*Dam*, Faygate Swan 72.

**POYNETTS KNOT 876,**

Black, calved November 14, 1923 ; breeder, Alfred H. Cocks ;  
*Sire*, Faygate Brace 13,  
*Dam*, Poynetts Gæa 436.

**POYNETTS LATONA 878,**

White with black points, calved March 19, 1924 ; breeder, Alfred H. Cocks ;  
*Sire*, Faygate Brace 13,  
*Dam*, Poynetts Galatea 438.

**POYNETTS LAURA 880,**

White with black points, calved May 27, 1924 ; breeder, Alfred H. Cocks ;  
*Sire*, Faygate Brace 13,  
*Dam*, Poynetts Hecate 446.

**POYNETTS LUA 882,**

White with black points, calved September 8, 1924 ; breeder, Alfred H. Cocks ;  
*Sire*, Poynetts Jupiter 197,  
*Dam*, Poynetts Judy 684.

**THE RIVINGTON HERD.**

Owner—**THE VISCOUNT LEVERHULME,**  
 The Bungalow, Rivington, near Horwich, Lancashire.

## COWS.

**RIVINGTON BETSY 884,**

White with black points, calved April 1, 1923 ; breeder, Alfred H. Cocks ;  
*Sire*, Solva Foam 75,  
*Dam*, Poynetts Hebe 444.

**RIVINGTON LASS 886,**

White with black points, calved January 28, 1924 ; breeder, The Viscount Leverhulme ;  
*Sire*, Solva Foam 75,  
*Dam*, Poynetts Hulder 450.

**THE SOLVA HERD.**

**Owner—CAPTAIN J. H. HOWELL,**  
Trewellwell. Solva R.S.O., Pembrokeshire.

**BULLS.****SOLVA DRIFT 203,**

White with black points, calved February 14, 1921; breeder,  
Captain J. H. Howell;

*Sire*, Solva Snowball 27,

*Dam*, Solva Icicle 98.

**SOLVA HAIL 205,**

White with black points, calved May 4, 1924; breeder, Captain  
J. H. Howell;

*Sire*, Solva Drift 203,

*Dam*, Solva Gwyn 458.

**SOLVA WHITE WREATH 207,**

White with black points, calved May 2, 1924; breeder, Captain  
J. H. Howell;

*Sire*, Solva Drift 203,

*Dam*, Solva Icicle 98.

**COWS.****SOLVA CYCLAMEN II. 888,**

White with black points, calved June 2, 1923; breeder, Captain  
J. H. Howell;

*Sire*, Solva Iceberg 77,

*Dam*, Solva Cyclamen 454.

**SOLVA ERMINE 890,**

White with black points, calved May 10, 1924; breeder, Captain  
J. H. Howell;

*Sire*, Solva Drift 203,

*Dam*, Solva Flax Plant 92.

**SOLVA FLAX PLANT II. 892,**

White with black points, calved May 9, 1923; breeder, Captain J. H. Howell;

*Sire*, Solva Iceberg 77,

*Dam*, Solva Flax Plant 92.

**SOLVA GWYN II. 894,**

White with black points, calved May 10, 1923; breeder, Captain J. H. Howell;

*Sire*, Solva Iceberg 77,

*Dam*, Solva Gwyn 458.

**SOLVA ICE PLANT II. 896,**

White with black points, calved September 28, 1923; breeder, Captain J. H. Howell;

*Sire*, Solva Iceberg 77,

*Dam*, Solva Ice Plant 96.

**SOLVA WHITE LADY 898,**

White with black points, calved April 14, 1924; breeder, Captain J. H. Howell;

*Sire*, Solva Drift 203,

*Dam*, Solva Snowdrop 106.

**SOLVA WHITE MIST 900,**

White with black points, calved July 6, 1924; breeder, Captain J. H. Howell;

*Sire*, Solva Drift 203,

*Dam*, Solva Cyclamen 454.

**THE WINKHURST HERD.**

**Owner—A. H. L. BOHRMANN,**

Winkhurst Green, Ide Hill, near Sevenoaks.

**BULLS.****WINKHURST STOREE 209 I.F.S.,**

White with black points, calved April 23, 1924; breeder, A. H. L. Bohrmann;

*Sire*, Winkhurst Wilcoteian 147 I.F.S.,

*Dam*, Winkhurst H.R.

**WINKHURST TAURUS 211 I.F.S.,**

White with black points, calved December 14, 1924; breeder, A. H. L. Bohrmann;

*Sire*, Winkhurst K.G. 145,

*Dam*, Winkhurst Westmorla.

**COWS.****WINKHURST BEAUTY II. 902 I.F.S.,**

White with black points, calved February 21, 1924; breeder, A. H. L. Bohrmann;

*Sire*, Woburn Young Chartley V. 101,

*Dam*, Winkhurst Beauty.

**WINKHURST FORTUNA 904 I.F.S.,**

White with black points, calved November 12, 1923; breeder, A. H. L. Bohrmann;

*Sire*, Winkhurst Wilcoteian 147 I.F.S.,

*Dam*, Winkhurst Westmorla.

**WINKHURST KIA-ORA 906 I.F.S.,**

White with red points, calved October 4, 1924; breeder, G. Carey;

*Sire*, Winkhurst K.G. 145,

*Dam*, Winkhurst Bluebell.



**WINKHURST PEGASIS 908 I.F.S.,**

White with dark dun points, calved February 14, 1924; breeder,  
G. Carey;

*Sire*, Winkhurst Wilcoteian 147 I.F.S.,

*Dam*, Winkhurst Peggy.

**WINKHURST VACCA 910,**

White with black points, calved November 18, 1924; breeder,  
A. H. L. Bohrmann;

*Sire*, Winkhurst K.G. 145,

*Dam*, Winkhurst Venus 704.

**THE CHARTLEY HERD (at Woburn).**

**Owner—THE DUKE OF BEDFORD, K.G.,**

Woburn Abbey, Bletchley.

**BULLS.****WOBURN MATTHIAS I. 213,**

White with black points, calved April 5, 1923; breeder, The Duke  
of Bedford, K.G.;

*Sire*, Faygate Matthias 71,

*Dam*, Woburn Buckingham XIII. 492 I.F.S.

**WOBURN MATTHIAS II. 215,**

White with black points, calved April 26, 1923; breeder, The Duke  
of Bedford, K.G.;

*Sire*, Faygate Matthias 71,

*Dam*, Woburn Buckingham XI. 490.

**WOBURN MATTHIAS III. 217,**

White with black points, calved May 2, 1923; breeder, The Duke  
of Bedford, K.G.;

*Sire*, Faygate Matthias 71,

*Dam*, Woburn Buckingham XII. 162.

**WOBURN MATTHIAS IV. 219,**

White with black points, calved July 12, 1923; breeder, The Duke  
of Bedford, K.G.;

*Sire*, Faygate Matthias 71,

*Dam*, Woburn Buckingham X. 160.

**WOBURN MATTHIAS V. 221,**

White with black points, calved July 14, 1923; breeder, The Duke of  
Bedford, K.G.;

*Sire*, Faygate Matthias 71,

*Dam*, Woburn Doris II. 166.

**WOBURN MATTHIAS VII. 223,**

White with black points, calved August 11, 1924 ; breeder, The Duke of Bedford, K.G. ;

*Sire*, Faygate Matthias 71,

*Dam*, Woburn Doris II. 166.

**WOBURN PERFECTION IX. 225,**

White with black points, calved March 27, 1923 ; breeder, The Duke of Bedford, K.G. ;

*Sire*, Woburn Perfection II. 89,

*Dam*, Woburn Buckingham VI. 482 I.F.S.

**WOBURN PERFECTION XI. 227,**

White with black points, calved March 27, 1924 ; breeder, The Duke of Bedford, K.G. ;

*Sire*, Woburn Perfection II. 89,

*Dam*, Woburn Buckingham VIII. 486.

## COWS.

**WOBURN BUCKINGHAM XXII. 912,**

Black, calved March 25, 1923 ; breeder, The Duke of Bedford, K.G. ;

*Sire*, Woburn Perfection II. 89,

*Dam*, Woburn Buckingham VIII. 486.

**WOBURN BUCKINGHAM XXIV. 914,**

White with black points, calved March 31, 1924 ; breeder, The Duke of Bedford, K.G. ;

*Sire*, Faygate Matthias 71,

*Dam*, Woburn Buckingham XIII. 492 I.F.S.

**WOBURN BUCKINGHAM XXV. 916,**

White with black points, calved March 31, 1924 ; breeder, The Duke of Bedford, K.G. ;

*Sire*, Woburn Perfection II. 89,

*Dam*, Woburn Buckingham VI. 482 I.F.S.

**WOBURN BUCKINGHAM XXVII. 918,**

White with black points, calved May 19, 1924 ; breeder, The Duke of Bedford, K.G. ;

*Sire*, Woburn Perfection II. 89,

*Dam*, Woburn Buckingham V. 480 I.F.S.

**WOBURN BUCKINGHAM XXVIII. 920,**

White with black points, calved July 1, 1924 ; breeder, The Duke of Bedford, K.G. ;

*Sire*, Faygate Matthias 71,

*Dam*, Woburn Buckingham XII. 162.

**WOBURN CHARTLEY V. 922,**

White with black points, calved February 26, 1924 ; breeder, The Duke of Bedford, K.G. ;

*Sire*, Woburn Young Chartley VIII. 151,

*Dam*, Woburn Chartley III. 164.

## Register of the Polled Herds.

### THE BAWDESWELL HERD.

Owner—MAJOR QUINTIN E. GURNEY,

Bawdeswell Hall, Norfolk.

#### BULLS.

##### BAWDESWELL BLACK PRINCE 229.

White with black points, calved April 27, 1924 ; breeder, John Cator ;

*Sire*, Woodbastwick Petrarch 139,

*Dam*, Woodbastwick Blackmail II. 352 I.F.S.

##### BAWDESWELL SPORTSMAN 231.

White with black points, calved May 20, 1923 ; breeder, Mrs. Richard Gurney ;

*Sire*, Bawdeswell Boanerges 107,

*Dam*, Northrepps Spot 284.

#### COWS.

##### BAWDESWELL CHARMING 924.

White with black points, calved September 5, 1924 ; breeder, Major Q. E. Gurney ;

*Sire*, Bawdeswell Leo 163,

*Dam*, Bawdeswell Cowrie 728.

##### BAWDESWELL CONEY 926.

White with black points, calved September 1, 1924 , breeder, Major Q. E. Gurney ;

*Sire*, Bolwick Courtier 169,

*Dam*, Bawdeswell Cowslip 510.

##### BAWDESWELL CONFERENCE 928.

White with black points, calved July 5, 1923 ; breeder, Major Q. E. Gurney ;

*Sire*, Bawdeswell Thunderer 117,

*Dam*, Bawdeswell Council 508.



BAWDESWELL SPIRAEA 538.

1st Newcastle-on-Tyne (R.A.S.E.), 1923.

Owner, Major Quintin Gurney.

**BAWDESWELL CORDELIA 930,**

White with black points, calved December 27, 1923 ; breeder, Major Q. E. Gurney ;

*Sire*, Bawdeswell Alpha 105,

*Dam*, Bawdeswell Cora 506.

**BAWDESWELL CORNCRAKE 932,**

White with black points, calved November 22, 1924 ; breeder, Major Q. E. Gurney ;

*Sire*, Bawdeswell Leo 163,

*Dam*, Bawdeswell Cora 506.

**BAWDESWELL COUNTESS II. 934,**

White with black points, calved March 21, 1924 ; breeder, Major Q. E. Gurney ;

*Sire*, Bawdeswell Leo 163,

*Dam*, Bawdeswell Countess 182.

**BAWDESWELL DAIRYMAID 936,**

White with black points, calved October 14, 1924 ; breeder, Major Q. E. Gurney ;

*Sire*, Faygate Dairyman 121,

*Dam*, Blickling Dahlia 750.

**BAWDESWELL DRYAD 938,**

White with black points, calved October 29, 1924 ; breeder, Major Q. E. Gurney ;

*Sire*, Faygate Dairyman 121,

*Dam*, Bawdeswell Dove 512 I.F.S.

**BAWDESWELL ELLA II. 940,**

White with black points, calved February 24, 1924 ; breeder, Major Q. E. Gurney ;

*Sire*, Bawdeswell Leo 163,

*Dam*, Bawdeswell Elnora 732.

**BAWDESWELL PLAYFUL 942,**

White, calved September 30, 1924 ; breeder, Major Q. E. Gurney ;

*Sire*, Faygate Dairyman 121,

*Dam*, Bawdeswell Playfair 526.

**BAWDESWELL SANFOIN 944,**

White with black points, calved June 28, 1924 ; breeder, Major Q. E. Gurney ;

*Sire*, Bolwick Courtier 169,

*Dam*, Bawdeswell Spark 536.

**BAWDESWELL SAN TOY 946,**

White with black points, calved August 9, 1923 ; breeder Major Q. E. Gurney ;

*Sire*, Bawdeswell Alpha 105,

*Dam*, Bawdeswell Spark 536.

**BAWDESWELL SNOW BELL 948,**

White with black points, calved December 24, 1923 ; breeder, Major Q. E. Gurney ;

*Sire*, Bawdeswell Druid 159,

*Dam*, Bawdeswell Snowball 196.

**BAWDESWELL SNOWDRIFT 950,**

White with black points, calved November 11, 1923 ; breeder, Major Q. E. Gurney ;

*Sire*, Bawdeswell Alpha 105,

*Dam*, Bawdeswell Snowbird 198.

**BAWDESWELL SPARKLER 952,**

White with black points, calved March 10, 1924 ; breeder, Mrs. Richard Gurney ;

*Sire*, Bawdeswell Druid 159,

*Dam*, Northrepps Sparkle 282.

## THE BOLWICK HERD.

Owners—WALTER BUXTON and C. R. BIRKBECK,  
Horstead House, Norwich.

### BULLS.

#### **BOLWICK REGENT 233,**

White with black points, calved January 25, 1923; breeder,  
Brigadier-General K. Kincaid Smith;

*Sire*, St. Osyth Rex 133,

*Dam*, Woodbastwick Jonquil 614.

#### **BOLWICK VENGEANCE 235 I.F.S.,**

White with black points, calved July 7, 1923; breeders, Buxton and  
Birkbeck;

*Sire*, Bawdeswell Elder 161,

*Dam*, Violet.

### COWS.

#### **BOLWICK DAFFODIL 954,**

White with black points, calved October 3, 1924; breeders, Buxton  
and Birkbeck;

*Sire*, Bawdeswell Elder 161,

*Dam*, Blickling Daphne 752.

#### **BOLWICK DAINTY 956 I.F.S.,**

White with black points, calved June 23, 1924; breeders, Buxton  
and Birkbeck;

*Sire*, Bawdeswell Elder 161,

*Dam*, Dot.

#### **BOLWICK DASH 958 I.F.S.,**

White with black points, calved June 23, 1924; breeders, Buxton and  
Birkbeck;

*Sire*, Bawdeswell Elder 161,

*Dam*, Dot.

**BOLWICK LAPWING 960,**

White with black points, calved February 28, 1923; breeders, Buxton and Birkbeck;

*Sire*, Bawdeswell Elder 161,

*Dam*, Northrepps Lilac 270.

**BOLWICK MERMAID 962 I.F.S.,**

White with black points, calved August 11, 1923; breeders, Buxton and Birkbeck;

*Sire*, Bawdeswell Elder 161,

*Dam*, Midget.

**BOLWICK MULBERRY 964,**

White with black points, calved June 29, 1924; breeders, Buxton and Birkbeck;

*Sire*, Bawdeswell Leo 163,

*Dam*, Bolwick Maple 758 I.F.S.

**BOLWICK MYRTLE 966,**

White with black points, calved December 11, 1924; breeders, Buxton and Birkbeck;

*Sire*, Bawdeswell Elder 161,

*Dam*, Blickling Moss Rose 756.

**THE FAYGATE HERD.**

Owner—**SIR CLAUD ALEXANDER, BART.,**

Faygate Wood, Sussex.

**BULL.****FAYGATE MASTER DAIRYMAN 237,**

White with black points, calved May 15, 1923; breeder, Sir Claud Alexander, Bart.;

*Sire*, Faygate Dairyman 121,

*Dam*, Faygate Grace 422.

**COWS.****FAYGATE LAURA 968,**

White with red points, calved August 25, 1923; breeder, John Cator;

*Sire*, Woodbastwick Petrarch 139,

*Dam*, Woodbastwick Janitress II. 1066.

**FAYGATE LEDA 970,**

White with black points, calved December 9, 1923; breeder, Sir Claud Alexander, Bart.;

*Sire*, Faygate Dairyman 121,

*Dam*, Faygate Swan II. 430.

**FAYGATE SWANSDOWN 972,**

White with black points, calved January 28, 1923; breeder, Sir Claud Alexander, Bart.;

*Sire*, Faygate Dairyman 121,

*Dam*, Faygate Swan II. 430.

**THE GIFFORDS HERD.**

**Owner—COLONEL J. C. TABOR,**  
Giffords Hall, Stoke-by-Nayland, Suffolk.

**BULLS.****GIFFORDS JANITOR 239,**

White with black points, calved July 25, 1923 ; breeder, John Cator ;  
*Sire*, Woodbastwick Petrarch 139,  
*Dam*, Woodbastwick Janitress 366 I.F.S.

**GIFFORDS NOEL 241,**

White with black points, calved December 24, 1924 ; breeder, Colonel  
J. C. Tabor ;  
*Sire*, Giffords Pluto 243,  
*Dam*, Woodbastwick Pegtop V. 622.

**GIFFORDS PLUTO 243,**

White with black points, calved April 9, 1921 ; breeder, John Cator ;  
*Sire*, Bawdeswell Plevna 43,  
*Dam*, Woodbastwick Pegtop 384.

**GIFFORDS RECTOR 245,**

White with black points, calved June 28, 1924 ; breeder, Colonel J. C.  
Tabor ;  
*Sire*, St. Osyth Rex 133,  
*Dam*, Woodbastwick Jester II. 612.

**COWS.****GIFFORDS JOKER 974,**

White with black points, calved July 6, 1923 ; breeder, Colonel J. C.  
Tabor ;  
*Sire*, Giffords Pluto 243,  
*Dam*, Woodbastwick Jester II. 612.

**GIFFORDS JUDY 976,**

White with black points, calved October 29, 1923 ; breeder, Colonel J. C. Tabor ;

*Sire*, Giffords Pluto 243,

*Dam*, Woodbastwick Junket III. 618.

**GIFFORDS PLENTY 978 I.F.S.,**

White with black points, calved October 26, 1924 ; breeder, Colonel J. C. Tabor ;

*Sire*, Giffords Pluto 243,

*Dam*, a half bred cow.

**GIFFORDS TIPTOP 980,**

White with black points, calved January 9, 1924 ; breeder, Colonel J. C. Tabor ;

*Sire*, Giffords Pluto 243,

*Dam*, Woodbastwick Pegtop V. 622.

**GIFFORDS VIOLA 982 I.F.S.,**

White with black points, calved February 15, 1923 ; breeder, Colonel J. C. Tabor ;

*Sire*, Giffords Pluto 243,

*Dam*, Nancy.

**GIFFORDS WHIPTOP 984,**

White with red points, calved February 7, 1923 ; breeder, Colonel J. C. Tabor ;

*Sire*, Woodbastwick Petrarch 139,

*Dam*, Woodbastwick Pegtop V. 622.

**THE KELMARSH HERD.**

**Owner—MRS. LANCASTER,**

Kelmarsh Hall, Northampton.

**BULLS.****KELMARSH PUNCH 247,**

White with black points, calved January 21, 1923 ; breeder, Mrs. Lancaster ;

*Sire*, Kelmarsh Chester 127,

*Dam*, Kelmarsh Primrose 258.

**KELMARSH REX 249,**

White with black points, calved January 8, 1924 ; breeder, Mrs. Lancaster ;

*Sire*, Bawdeswell Pete 165,

*Dam*, Kelmarsh Rose II. 566.

**COWS.****KELMARSH BUTTERCUP IV. 986,**

White with black points, calved February 5, 1924 ; breeder, Mrs. Lancaster ;

*Sire*, Bawdeswell Pete 165,

*Dam*, Kelmarsh Buttercup 236 A.

**KELMARSH COWSLIP III. 988,**

White with black points, calved March 14, 1923 ; breeder, Mrs. Lancaster ;

*Sire*, Bawdeswell Pete 165,

*Dam*, Kelmarsh Cowslip II. 548.

**KELMARSH IRIS III. 990,**

White with black points, calved January 30, 1924 ; breeder, Mrs. Lancaster ;

*Sire*, Bawdeswell Pete 165,

*Dam*, Kelmarsh Iris II. 554.



**KELMARSH MARGARET II. 992,**

White with black points, calved March 12, 1924; breeder, Mrs. Lancaster;

*Sire*, Bawdeswell Pete 165,

*Dam*, Kelmarsh Margaret 558.

**KELMARSH MEADOW SWEET II. 994,**

White with black points, calved May 4, 1923; breeder, Mrs. Lancaster;

*Sire*, Bawdeswell Pete 165,

*Dam*, Kelmarsh Meadow Sweet 252.

**KELMARSH PANSY III. 996,**

White with black points, calved May 10, 1923; breeder, Mrs. Lancaster;

*Sire*, Bawdeswell Pete 165,

*Dam*, Kelmarsh Pansy II. 560.

**KELMARSH POPPY 998,**

White with black points, calved January 1, 1923; breeder, Mrs. Lancaster;

*Sire*, Kelmarsh Chester 127,

*Dam*, Kelmarsh Margaret 558.

**KELMARSH PRIMROSE III. 1000,**

White with black points, calved August 8, 1924; breeder, Mrs. Lancaster;

*Sire*, Bawdeswell Pete 165,

*Dam*, Kelmarsh Primrose 258.

**KELMARSH SNOWDROP VI. 1002,**

White with black points, calved August 15, 1924; breeder, Mrs. Lancaster;

*Sire*, Bawdeswell Pete 165,

*Dam*, Kelmarsh Snowdrop 262.

**KELMARSH WALLFLOWER IV. 1004,**

White with black points, calved August 8, 1923; breeder, Mrs. Lancaster;

*Sire*, Bawdeswell Pete 165,

*Dam*, Kelmarsh Wallflower 266.

**THE NORTHREPPS HERD.**

Owner—**MRS. RICHARD GURNEY,**

Northrepps Hall, Norwich.

COW.

**NORTHREPPS MYRTLE 1006,**

White with black points, calved March 9, 1924; breeder, Mrs. Richard Gurney;

*Sire*, Blickling Victor 167,

*Dam*, Blickling Maisie 214.

**THE ST. OSYTH HERD.**

**Owner—BRIGADIER-GENERAL KENNETH KINCAID  
SMITH.**

The Priory, St. Osyth, near Colchester.

**BULL.****ST. OSYTH BARD 251,**

White with black points, calved December 15, 1923; breeder,  
Brigadier-General K. Kincaid Smith;

*Sire*, St. Osyth Rex 133,

*Dam*, Northrepps Lichen 578.

**COWS.****ST. OSYTH ARIZONA 1008,**

White with black points, calved October, 1920; breeder, Mrs.  
Lancaster;

*Sire*, Kelmarsh King 129,

*Dam*, a Kelmarsh Cow.

**ST. OSYTH BARONESS 1010,**

White with black points, calved May 8, 1923; breeder, Brigadier-  
General K. Kincaid Smith;

*Sire*, St. Osyth Rex 133,

*Dam*, St. Osyth Marsh 1032.

**ST. OSYTH BLANCHE 1012,**

White with black points, calved June 11, 1923; breeder, Brigadier-  
General K. Kincaid Smith;

*Sire*, St. Osyth Rex 133,

*Dam*, Bawdeswell Prunella 530.

**ST. OSYTH BLOSSOM 1014,**

White with black points, calved January 5, 1923; breeder, Brigadier-  
General K. Kincaid Smith;

*Sire*, St. Osyth Rex 133,

*Dam*, Northrepps Lichen 578.

**ST. OSYTH CALENDAR 1016 I.F.S.,**

White with black points, calved May, 1922; breeder, John Wilson;

*Sire*, a Galloway bull,

*Dam*, a Park cow\*.

**ST. OSYTH CARRON 1018 I.F.S.,**

White with black points, calved March, 1922; breeder, John Wilson;

*Sire*, a Galloway bull,

*Dam*, a Park cow\*.

**ST. OSYTH CELIA 1020,**

White with black points, calved December 14, 1924; breeder Brigadier-General K. Kincaid Smith;

*Sire*, St. Osyth Rex 133,

*Dam*, St. Osyth Alpha 784.

**ST. OSYTH CLACTON 1022,**

White with black points, calved May 28, 1924; breeder, Brigadier-General K. Kincaid Smith;

*Sire*, St. Osyth Rex 133,

*Dam*, St. Osyth Arizona 1008.

**ST. OSYTH CLARA 1024,**

White with black points, calved March 8, 1924; breeder, Brigadier General K. Kincaid Smith;

*Sire*, St. Osyth Rex 133,

*Dam*, Woodbastwick Jasper III. 610.

**ST. OSYTH CLYDE 1026 I.F.S.,**

White with black points, calved June, 1923; breeder, John Wilson;

*Sire*, a Galloway bull,

*Dam*, a Park cow\*.

\*The dams and grand dams of these cows were bred at Drumlanford, S. Ayrshire, by Sir W. Beale, and their great grand dams at Dooniel (an adjoining property) by Colonel Boyd, the sires being Cuckoo wild bulls.

**ST. OSYTH CONSTANCE 1028,**

White with grey points, calved February 19, 1924; breeder, Brigadier-General K. Kincaid Smith;

*Sire*, St. Osyth Rex 133,

*Dam*, Woodbastwick Jonquil 614.

**ST. OSYTH CRANBERRY 1030,**

White with black points, calved October 17, 1924; breeder, Brigadier-General K. Kincaid Smith;

*Sire*, St. Osyth Rex 133,

*Dam*, Woodbastwick Blackberry 346.

**ST. OSYTH MARSH 1032,**

White with black points, calved February, 1920; breeder, Mrs. Lancaster;

*Sire*, Kelmarsh King 129,

*Dam*, a Kelmarsh cow.

**THE SEDGEMERE HERD.**

**Owner—SAM WOODIWISS,**  
Graveleys, Great Waltham, near Chelmsford.

COW.

**SEDGEMERE ALBA 1034,**

White with black points, calved January 28, 1925; breeder, G.  
Linfoot;

*Sire*, Woodrooffe Cato 179,

*Dam*, Faygate Heads 230.

## THE SOMERFORD HERD.

Owner—**COL. SIR WALTER SHAKERLEY, Bart., C.B.E.,**  
Somersford Park, Congleton.

### COWS.

#### SOMERFORD AUNT 1036,

White with black points, calved February 21, 1924; breeder, Col. Sir Walter Shakerley Bart., C.B.E.;

*Sire*, Bawdeswell Snowdon 113,

*Dam*, Somersford Auntie II. 288.

#### SOMERFORD BIG MOLLIE III. 1038,

White with black points, calved December 23, 1923; breeder, Col. Sir Walter Shakerley, Bart., C.B.E.;

*Sire*, Bawdeswell Snowdon 113,

*Dam*, Somersford Big Mollie II. 292.

#### SOMERFORD CHARLIE VI. 1040,

White with black points, calved December 20, 1923; breeder, Col. Sir Walter Shakerley, Bart., C.B.E.;

*Sire*, Bawdeswell Snowdon 113,

*Dam*, Somersford Charlie III. 300.

#### SOMERFORD JOAN II. 1042,

White with black points, calved April 6, 1924; breeder, Col. Sir Walter Shakerley, Bart., C.B.E.;

*Sire*, Bawdeswell Snowdon 113,

*Dam*, Somersford Joan 302.

#### SOMERFORD SNOWBUT 1044,

White with black points, calved April 1, 1923; breeder, Col. Sir Walter Shakerley, Bart., C.B.E.;

*Sire*, Bawdeswell Snowdon 113,

*Dam*, Somersford Little Bit III. 584 I.F.S.

**SOMERFORD SNOWTOP 1046,**

White with black points, calved June 1, 1923; breeder, Col. Sir Walter Shakerley, Bart., C.B.E.;

*Sire*, Bawdeswell Snowdon 113,

*Dam*, Somerford Topsy II. 596 I.F.S.

**SOMERFORD TOPSY IV. 1048,**

White, calved March 18, 1924; breeder, Col. Sir Walter Shakerley, Bart., C.B.E.;

*Sire*, Bawdeswell Snowdon 113,

*Dam*, Somerford Topknot II. 332.

**SOMERFORD TOPSYKNOT 1050,**

White with black points, calved May 9, 1924; breeder, Col. Sir Walter Shakerley, Bart., C.B.E.;

*Sire*, Bawdeswell Snowdon 113,

*Dam*, Somerford Topsy 594.

**SOMERFORD WHITE HEATHER IV. 1052,**

White with black points, calved June 4, 1923; breeder, Col. Sir Walter Shakerley, Bart., C.B.E.;

*Sire*, Bawdeswell Snowdon 113,

*Dam*, Somerford White Heather III. 338.

**SOMERFORD WHITE ROSE IV. 1054,**

White with black points, calved July 24, 1923; breeder, Col. Sir Walter Shakerley, Bart., C.B.E.;

*Sire*, Bawdeswell Snowdon 113,

*Dam*, Somerford White Rose III. 598 I.F.S.

**THE THEYDON HERD.**

**Owner—JOHN H. SILLEY,**

Theydon Grove, Epping.

COWS.

**THEYDON COWSLIP 1056,**

White with black points, calved January 2, 1923; breeder, Mrs. Lancaster;

*Sire*, Kelmarsh Chester 127,

*Dam*, Kelmarsh Buttercup II. 544.

**THEYDON LILY 1058,**

White with black points, calved August 19, 1923; breeder, Mrs. Lancaster;

*Sire*, Bawdeswell Pete 165,

*Dam*, Kelmarsh Snowdrop 262.

## THE WOODBASTWICK HERD.

Owner—**JOHN CATOR**,  
Woodbastwick Hall, Norwich.

### BULLS.

#### **WOODBASTWICK CHIEFTAIN 253,**

White with black points, calved June 21, 1923; breeder, Sir Claud Alexander, Bart.;

*Sire*, Woburn Young Chartley V. 101,

*Dam*, Faygate Jemima 540.

#### **WOODBASTWICK CONQUEROR 255,**

White with black points, calved April 30, 1924; breeder, Major Q. E. Gurney;

*Sire*, Bawdeswell Leo 163,

*Dam*, Bawdeswell Council 508.

#### **WOODBASTWICK PLANTAGENET 257,**

White with black points, calved December 18, 1921; breeder, John Cator;

*Sire*, Bawdeswell Plevna 43,

*Dam*, Woodbastwick Blackberry III. 350.

### COWS.

#### **WOODBASTWICK BLACKBIRD II. 1060,**

White with black points, calved September 1, 1923; breeder, John Cator;

*Sire*, Woodbastwick Petrarch 139,

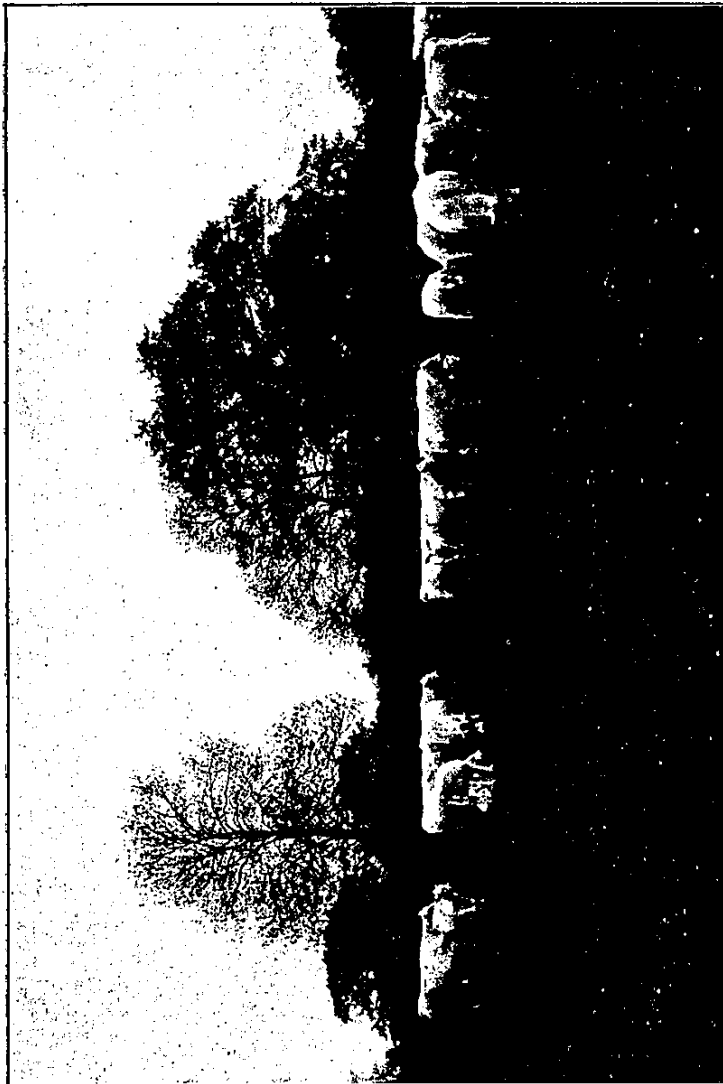
*Dam*, Woodbastwick Blackbird 606.

#### **WOODBASTWICK BLACK PEARL 1062,**

White with black points, calved March 2, 1924; breeder, John Cator;

*Sire*, Woodbastwick Petrarch 139,

*Dam*, Woodbastwick Blackberry III. 350.



PART OF THE HERD AT WOODBASTWICK.

**WOODBASTWICK BLUE PETER III. 1064,**

White with red points, calved October 15, 1922; breeder, John Cator;

*Sire*, Woodbastwick Petrarch 139,

*Dam*, Woodbastwick Blue Peter 358 I.F.S.

**\*WOODBASTWICK JANITRESS II. 1066,**

White with black points, calved July 13, 1919; breeder, John Cator;

*Sire*, Woodbastwick Peter 67,

*Dam*, Woodbastwick Janitress 366 I.F.S.

**WOODBASTWICK JASMINE 1068,**

White with black points, calved August 22, 1923; breeder, John Cator;

*Sire*, Woodbastwick Petrarch 139,

*Dam*, Woodbastwick Jasper II. 372.

**WOODBASTWICK PEPPERMINT III. 1070,**

White with black points, calved May 30, 1922; breeder, John Cator;

*Sire*, Bawdeswell Plevna 43,

*Dam*, Woodbastwick Peppermint 624.

**WOODBASTWICK PEPPERMINT IV. 1072,**

White with black points, calved June 22, 1923; breeder, John Cator;

*Sire*, Woodbastwick Petrarch 139,

*Dam*, Woodbastwick Peppermint 624.

**WOODBASTWICK WOODPECKER 1074,**

White with black points, calved September 17, 1922; breeder, John Cator;

*Sire*, Woodbastwick Petrarch 139,

*Dam*, Woodbastwick Pegtop II. 386 I.F.S.

\*The entry of Woodbastwick Janitress II. was an omission from Volume II.

**THE WOODROOFFE HERD.**

**Owner—MAJOR E. SYDNEY WOODIWISS,**  
"Woodrooffe," Great Waltham, near Chelmsford, Essex.

COWS.

**WOODROOFFE ALPHA 1076 I.F.S.,**

White with black points, calved December 14, 1923; breeder, Major E. S. Woodiwiss;

*Sire*, a Friesian bull,

*Dam*, Faygate Heads 230.

**WOODROOFFE AMY 1078,**

White with black points, calved May 21, 1924; breeder, Major E. S. Woodiwiss;

*Sire*, Woodrooffe Cato 179,

*Dam*, Faygate Rose of Lancaster 232.



**PREFIXES GRANTED BY THE PARK CATTLE SOCIETY.**

Bawdeswell	...	...	Gurney, Major Q. E.
Bolwick	...	...	Walter Buxton and C. R. Birkbeck.
Cadzow	...	...	Hamilton, The Duke of
Chillingham	...	...	Tankerville, The Earl of
Dynevor	...	...	Dynevor, The Lord
Faygate	...	...	Alexander, Sir Claud, Bart.
Giffords	...	...	Tabor, Colonel J. C.
Higham	...	...	Jobling, Mrs. R. L.
Kelmarsh	...	...	Lancaster, Mrs.
Northrepps	...	...	Gurney, Mrs. Richard
Poynetts	...	...	Cocks, Alfred Heneage
Ranworth	...	...	Cator, Captain J. H., M.C.
Rivington	...	...	Leverhulme, The Viscount
St. Osyth	...	...	Smith, Brigadier-General K. Kincaid
Sedgemere	...	...	Woodiwiss, Sam
Solva	...	...	Howell, Captain J. H.
Somerford	...	...	Shakerley, Col. Sir Walter, Bart, C.B.E.
Theydon	...	...	Silley, John H.
Vaynol	...	...	Duff, Sir Michael, Bart.
Winkhurst	...	...	Bohrmann, A. H. L.
Woburn	...	...	Bedford, The Duke of, K.G.
Woodbastwick	...	...	Cator, John
Woodrooffe	...	...	Woodiwiss, Major E. Sydney

### AWARDS AT SHOWS.

1923.

Owner.

NEWCASTLE-ON-TYNE (R.A.S.E.). Judge: A. H. L. Bohrmann.

- Bulls* ... 1 St. Osyth Rex 133 ... Brigadier-General K. Kincaid Smith.  
 2 Bawdeswell Alpha 105 ... Major Q. E. Gurney.  
 3 Kelmarsh Jack 173 ... Mrs. Lancaster.
- Cows* ... 1 Bawdeswell Spiraea 538 ... Major Q. E. Gurney.  
 2 Woodbastwick Jasper III.  
 610... \*... ... Brigadier-General K. Kincaid Smith.  
 3 Woodbastwick Blackberry  
 III. 350 ... ... John Cator.

1924.

LEICESTER (R.A.S.E.).

Judge: Sam Woodiwiss.

- Bulls* ... 1 Bolwick Courtier 169 ... Major Q. E. Gurney.  
 2 Woburn Perfection IX. 225 The Duke of Bedford, K.G.  
 3 Woburn Matthias II. 215 ... The Duke of Bedford, K.G.

1924.

NORTH WALSHAM AND AYLHAM.

Judge: Herbert Blofield.

- Bulls* ... 1 Bawdeswell Elder 161 ... Buxton and Birkbeck.  
 2 St. Osyth Rex 133 ... Brigadier-General K. Kincaid Smith.
- Cows* ... 1 Bawdeswell Spark 536 ... Major Q. E. Gurney.  
 2 Northrepps Lilac 270 ... Buxton and Birkbeck.

### TRANSFERS.

#### HORNED.

##### BULLS.

- Dynevor Ides 185, from The Lord Dynevor to Captain J. H. Howell.  
 Faygate Enterprise 187, from Sir Claud Alexander, Bart., to G. F. Sanders.  
 Poynetts Kentigern 199, from Alfred H. Cocks to The Duke of Bedford, K.G.  
 Solva Foam 75, from Captain J. H. Howell to Alfred H. Cocks.  
 Woburn Matthias I. 213, from The Duke of Bedford, K.G., to J. H. Silley.  
 Woburn Matthias III. 217, from The Duke of Bedford, K.G., to The Viscount Leverhulme.  
 Woburn Young Chartley V. 101, from Sir Claud Alexander, Bart., to The Lord Dynevor.  
 Woburn Young Chartley IX. 153, from The Duke of Bedford, K.G., to Alfred H. Cocks.

##### COWS.

- Blickling Daphne 752, from T. H. Case to Buxton and Birkbeck.  
 Blickling Moss Rose 756, from T. H. Case to Buxton and Birkbeck.  
 Dynevor Grace 640, from The Lord Dynevor to J. H. Silley.  
 Dynevor Jessie 840, from The Lord Dynevor to J. H. Silley.  
 Faygate Elise 66 I.F.S., from Alfred H. Cocks to J. H. Silley.  
 Faygate Pippin 426, from Sir Claud Alexander, Bart., to Mrs. R. L. Jobling.  
 Faygate Wilful IV. 78, from Sir Claud Alexander, Bart., to Mrs. R. L. Jobling.  
 Poynetts Aurora 82, from Alfred H. Cocks to The Duke of Bedford, K.G.  
 Poynetts Hebe 444, from Alfred H. Cocks to Sir Claud Alexander, Bart.  
 Poynetts Hebe 444, from Sir Claud Alexander, Bart., to The Viscount Leverhulme.

- Poynetts Heldig 448, from Alfred H. Cocks to The Duke of Bedford, K.G.  
 Poynetts Hulder 450, from Alfred H. Cocks to Sir Claud Alexander, Bart.  
 Poynetts Hulder 450, from Sir Claud Alexander, Bart., to The Viscount Leverhulme.  
 Poynetts Ianthe 666, from Alfred H. Cocks to The Duke of Bedford, K.G.  
 Poynetts Iona 672, from Alfred H. Cocks to The Duke of Bedford, K.G.  
 Poynetts Juno 688, from Alfred H. Cocks to The Duke of Bedford, K.G.  
 Poynetts Kari 874, from Alfred H. Cocks to The Duke of Bedford, K.G.

## POLLED.

## BULLS.

- Blickling Victor 167, from T. H. Case to John Cator.  
 Faygate Dairyman 121, from Sir Claud Alexander, Bart., to Major Q. E. Gurney.  
 St. Osyth Bard 251, from Brigadier-General K. Kincaid Smith to Mrs. Lancaster.  
 Somerford Snowman 175, from Col. Sir Walter Shakerley, Bart., C.B.E., to J. H. Silley.

## Cows.

- Bawdeswell Albania 170 I.F.S., from Major Q. E. Gurney to Major E. Sydney Woodiwiss.  
 Bawdeswell Fuchsia 518 I.F.S., from Major Q. E. Gurney to Mrs. R. Gurney.  
 Bawdeswell Liberty 738, from Major Q. E. Gurney to J. H. Silley.  
 Bawdeswell Snowbird 198, from Major Q. E. Gurney to J. H. Silley.  
 Bawdeswell Sparklet 744, from Major Q. E. Gurney to Major E. Sydney Woodiwiss.  
 Blickling Dahlia 750, from T. H. Case to Major Q. E. Gurney.  
 Blickling Mabel 212, from T. H. Case to Major Q. E. Gurney.  
 Blickling Maisie 214, from T. H. Case to Mrs. R. Gurney.

- Blickling Marigold 754, from T. H. Case to Major Q. E. Gurney.  
 Blickling Moses 218, from T. H. Case to Mrs. R. Gurney.  
 Faygate Heads 230, from G. Linfoot to Sam Woodiwiss.  
 Kelmarsh Buttercup III. 766, from Mrs. Lancaster to Mrs. R. L. Jobling.  
 Kelmarsh Buttercup IV. 986, from Mrs. Lancaster to Brigadier-General K. Kincaid Smith.  
 Kelmarsh Cowslip III. 988, from Mrs. Lancaster to Mrs. R. L. Jobling.  
 Northrepps Lily 272, from Mrs. R. Gurney to Major Q. E. Gurney.  
 Somerford Little Bit 310, from Col. Sir Walter Shakerley, Bart., C.B.E., to J. H. Silley.  
 Woodbastwick Jester II. 612, from John Cator to Colonel J. C. Tabor.  
 Woodbastwick Junket III. 618, from John Cator to Colonel J. C. Tabor.  
 Woodbastwick Pegtop V. 622, from John Cator to Colonel J. C. Tabor.  
 Woodrooffe Alpha 1076 I.F.S., from Major E. Sydney Woodiwiss to Colonel J. C. Tabor.  
 Woodrooffe Amy 1078, from Major E. Sydney Woodiwiss to Colonel J. C. Tabor.

